



HANDLE WITH CARE OKLAHOMA

PROTECT • HEAL • THRIVE

Website: <https://handlewithcareok.org/>
Email: info@handlewithcareok.org



CLEET Approved: Training #23-02095

Creating Connections to Support Oklahoma's Youth

Mental Health 1.0 CEU
Updated 1/10/2024



OKLAHOMA
State Department
of Health

*OSDH Planning Grant: Health Disparities
Aug. 1, 2022 – May 31, 2023*



Public Health
Institute of
Oklahoma



OKLAHOMA
Department of Public Safety



HANDLE WITH CARE OKLAHOMA

PROTECT • HEAL • THRIVE

HWC OK State Advisory Members



Gary Shelton
Council on Law Enforcement Education and Training (CLEET)



Chief Gourley & Captain Michelle Henderson
OK City Police Department



Public Health
Institute of
Oklahoma

Gena Koster & Tracy Alvarez, OK City Public Schools

Chief/Dr. Wicks, Tulsa Schools Police Department

Adrienne Elder & Leigh Woody, Public Health Institute of OK

Chief Todd Gibson & LT. Kyle Hill
Moore Police Department/OK Assoc. of Chiefs of Police

Keith Stewart, Tenna Abraham, & Stephanie Prince
OK Department of Public Safety

Ray McNair & Brandon Hendrix, OK Sheriffs Association

Sheri Fleming, Rachel Hernandez, & Christi Sturgeon
OK State Dept of Education



OKLAHOMA SHERIFFS' ASSOCIATION
TRAINING • TECHNOLOGY • TRADITION



OKLAHOMA
Mental Health &
Substance Abuse



OKLAHOMA
Human Services



OKLAHOMA
State Department
of Health



OKLAHOMA
COMMISSION ON
CHILDREN AND YOUTH



Brittany Couch & Stacy Williams
OK Dept of Mental Health and Substance Abuse

Keitha Wilson & Monica Brumnett
OK Department of Human Services

Lorri Essary & Autumn Cooper
OK State Department of Health

Annette Jacobi & Amber Adams (OCCY PPB)
OK Commission on Children & Youth

Robert Lee & Doug Ishmael
Evolution Foundation

AJ Griffin, Potts Family Foundation

Joe Dorman & Peyton Stacy, OK Institute for Child Advocacy

Kim Whaley & Melissa Simms, OK Turning Point Council



Potts Family Foundation



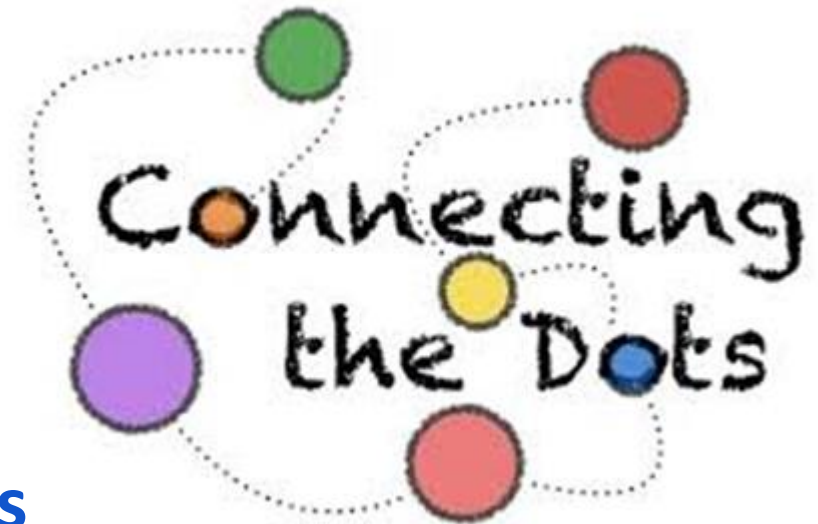


HANDLE WITH CARE OKLAHOMA

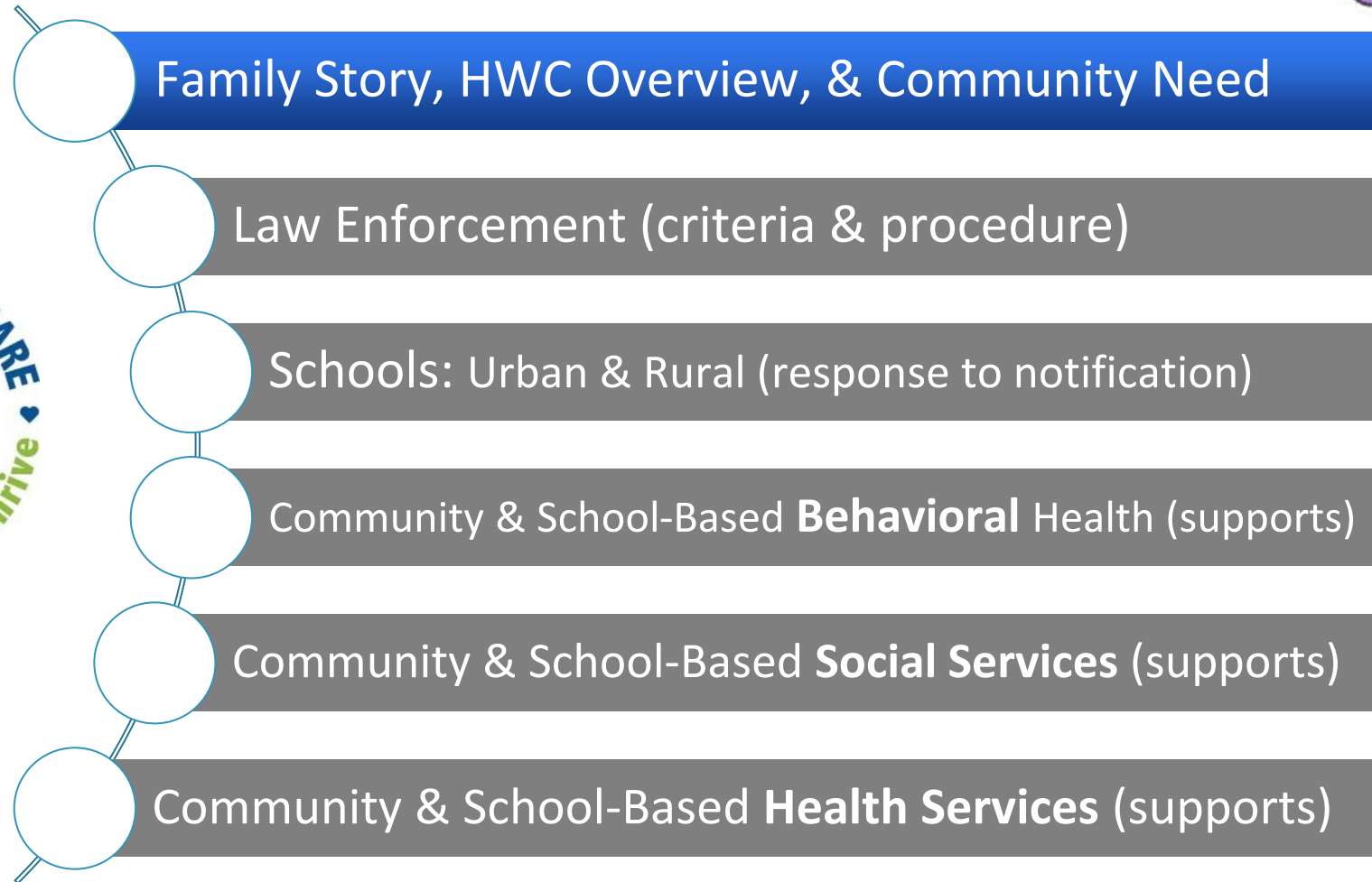
PROTECT • HEAL • THRIVE

Objectives:

- Steps for HWC Implementation (criteria, procedure, and response to notification)
- Process to enhance local existing partnerships and school-based efforts
- Strategies to Increase Sustainability



Interagency Roadmap: Handle With Care



Family Story, HWC Overview, & Community Need

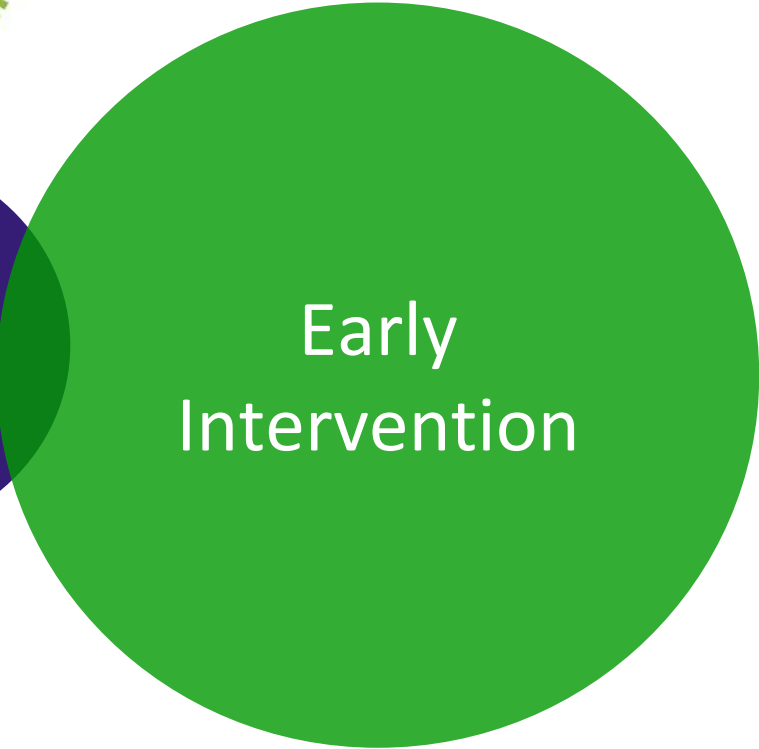
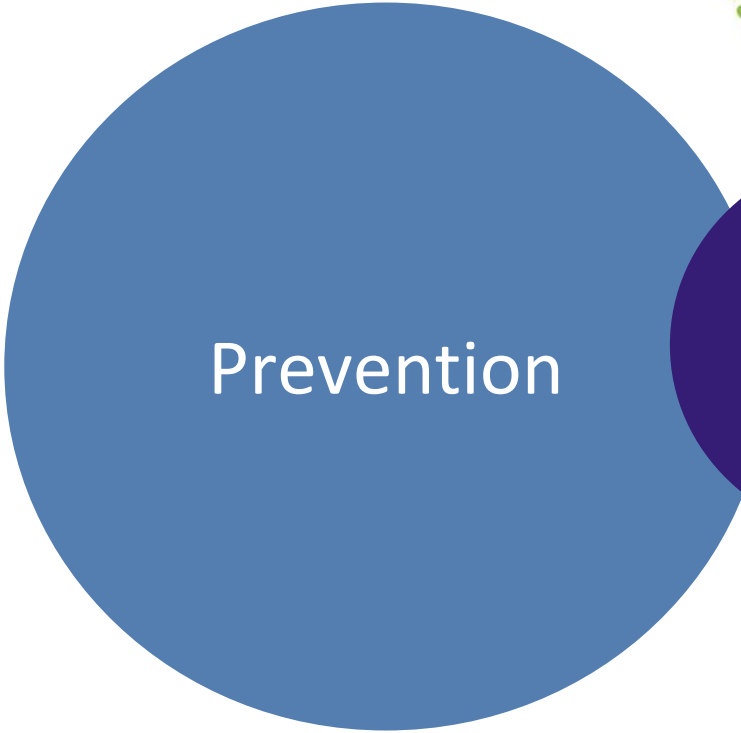
Law Enforcement (criteria & procedure)

Schools: Urban & Rural (response to notification)

Community & School-Based **Behavioral** Health (supports)


Community & School-Based **Social Services** (supports)

Community & School-Based **Health Services** (supports)




Simple Strategy:

All first responders maintain communication with schools regarding children/teens exposed to a traumatic event, so all children can feel safe and learn.



HANDLE WITH CARE OKLAHOMA
PROTECT • HEAL • THRIVE

Our school practices
Handle With Care
so all children can feel safe and learn.



The "Handle With Care" Model: If a law enforcement officer encounters a child during a call, that child's information is forwarded to the school before the school bell rings the next day. The school implements individual class and whole school trauma-sensitive curricula so that traumatized children are "Handled With Care". If a child needs more intervention, on-site trauma-focused mental healthcare is available at the school.

Learn more:
HandleWithCareOK.org



HANDLE WITH CARE OKLAHOMA

PROTECT • HEAL • THRIVE

"Creating Connections to Support Oklahoma's Youth"

"Handle With Care Oklahoma" is designed to advance partnerships between law enforcement, schools, and behavioral/social/health providers to create a safe and supportive academic environment for children recently exposed to traumatic events known as "adverse childhood experiences" (ACEs). ACEs are broad and sweeping events that may include experiencing violence, abuse, or neglect, or witnessing violence in the home. With buffering supports, ACEs can be addressed and lead to a positive life trajectory. Children must feel safe in order to learn.

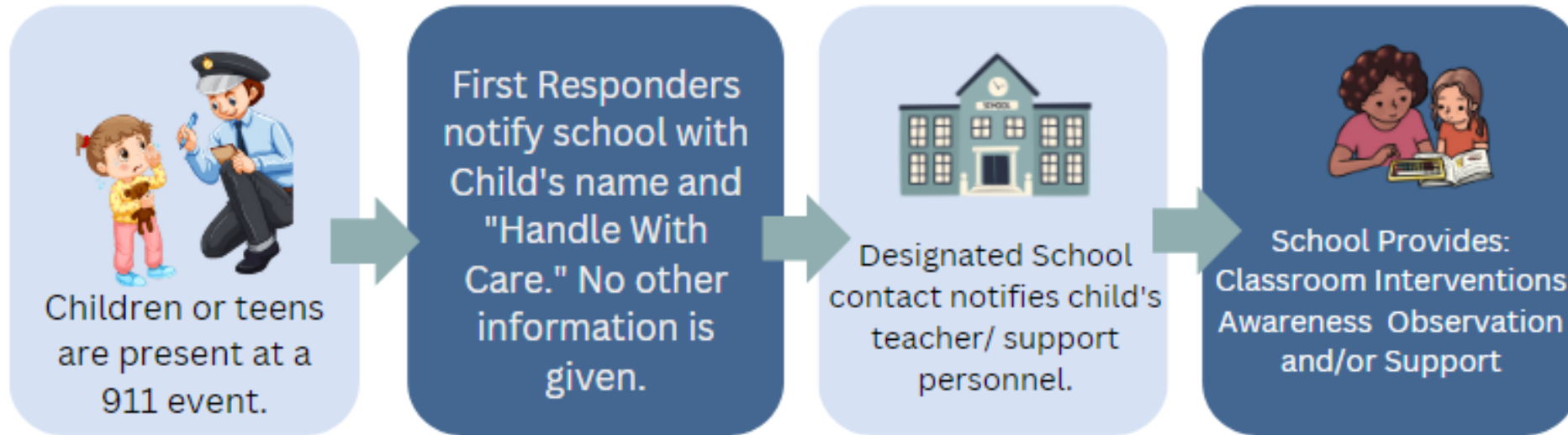


HANDLE WITH CARE OKLAHOMA

PROTECT • HEAL • THRIVE

Flow Chart:

Children must feel safe in order to learn.



After the school notification, additional support may be needed. Teachers/Behavioral/Social Service/Health Specialists assess to provide interventions and support, as needed.

The Goal:

To provide schools with a simple notice of children experiencing ACEs so the school may handle them with care and mitigate the negative impact of trauma on them. This simple notice can help ensure a child's well-being and academic success.

The Process:

When a first responder responds to, or encounters, an incident involving a traumatic event where a child is present, the officer will complete a simple Handle With Care Notice (HWC Notice) and provide it to the child's school, advising educators in general terms that the child has experienced an ACE event. Enables first responders to start building trust and positive connections.

The Protections:

The HWC Notice only reports a child's name, age, grade, school of enrollment, and the date and time of the incident, but shares no details of the incident. Teachers do not discuss the traumatic event with the child. Instead, they are encouraged to take steps to provide additional support to the child, such as re-teaching lessons, providing extra help, or sending the student to the school nurse or counselor.



Overview Video & “Handle With Care: Community Spotlights”



First responders often walk away from a traumatic scene wishing they could do more for the kids.....

Source: 9 min Overview to Share with Community
<https://vimeo.com/380526937>

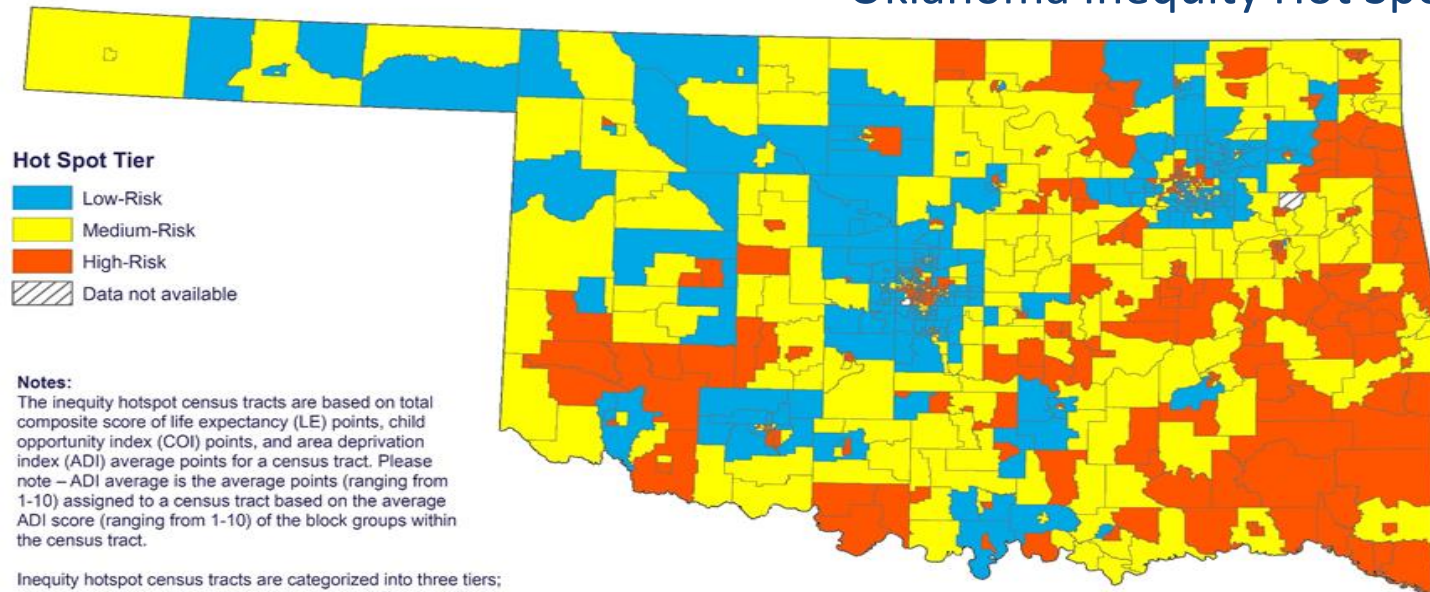
Tahlequah Video: (rural partner)
<https://www.youtube.com/watch?v=JXe-n10xNdI>

OKC Video: (urban partner)
https://www.youtube.com/watch?v=IKPady_4vGw

Why is this important?

Families across Oklahoma are experiencing multiple adversities
One agency or organization cannot “fix” this alone.

Oklahoma Inequity Hot Spots



Hot Spot Tier

- Low-Risk
- Medium-Risk
- High-Risk
- Data not available

Notes:

The inequity hotspot census tracts are based on total composite score of life expectancy (LE) points, child opportunity index (COI) points, and area deprivation index (ADI) average points for a census tract. Please note – ADI average is the average points (ranging from 1-10) assigned to a census tract based on the average ADI score (ranging from 1-10) of the block groups within the census tract.

Inequity hotspot census tracts are categorized into three tiers; high-risk, medium-risk, and low-risk using cutoff points of:

1. 17 or greater (high-risk)
2. 12-16 (medium-risk)
3. Less than 12 (low-risk)

Data Source:
Community Analysis and Linkages
Oklahoma State Department of Health

Created: 12.08.2021



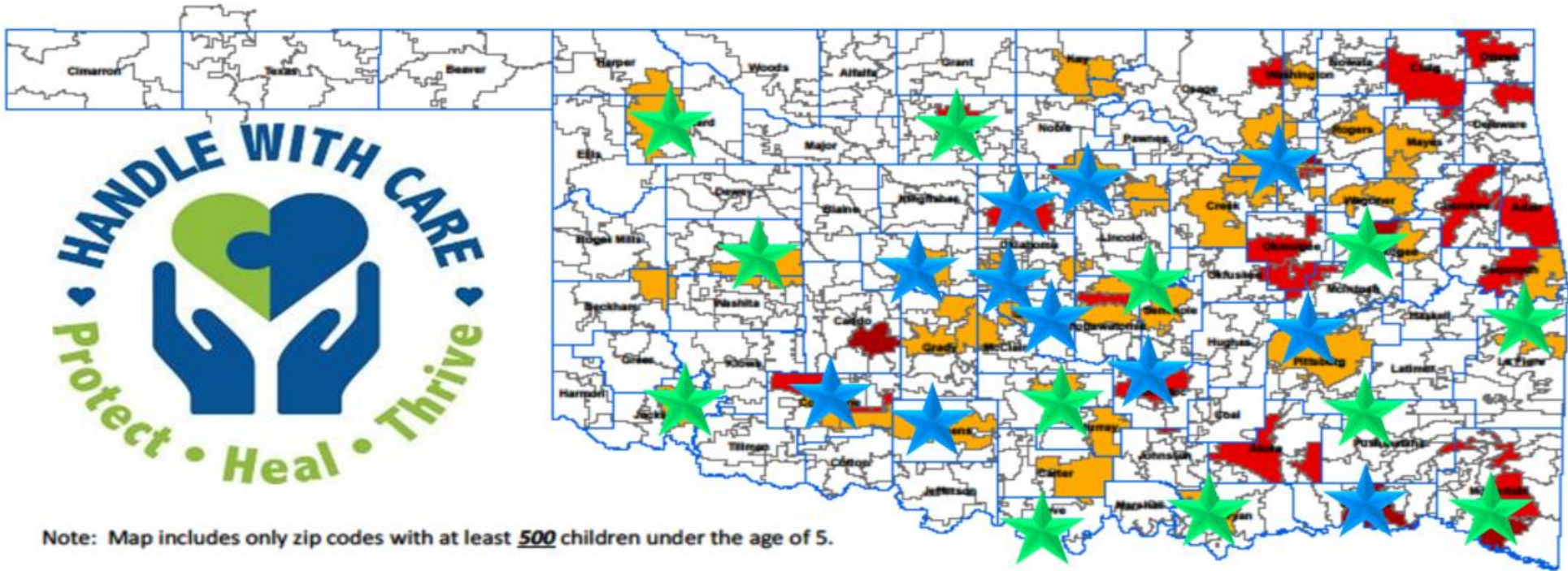
0 40 80 160
Miles
Projection/Coordinate System: USGS Albers Equal Area Conic



Disclaimer: This map is a compilation of records, information and data from various city, county and state offices and other sources, affecting the area shown, and is the best representation of the data available at the time. The map and data are to be used for reference purposes only. The user acknowledges and accepts all inherent limitations of the map, including the fact that the data are dynamic and in a constant state of maintenance.



Growing Interest in the Handle With Care Model in Oklahoma



Note: Map includes only zip codes with at least 500 children under the age of 5.

-  = interest in Handle With Care
-  = Implementing Handle With Care

Source: US Census Bureau, 2010-14 American Community Survey.
 Map prepared by the Community Service Council 10.17.16. (rev. 1.24.17)

Monthly Statewide Planning Meetings

Monthly planning call:
1st Wednesdays
10-11am

<https://us02web.zoom.us/j/84481751587>

Trainings available upon request
Email: info@handlewithcareok.org

*Special thanks to
OTPC and PHIO for
incubating and
providing backbone
support:*

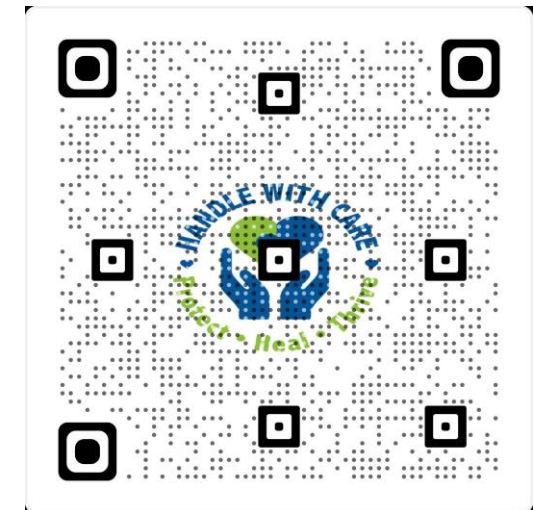


Oklahoma Turning Point Council
COMMUNITY PARTNERS IN PUBLIC HEALTH INNOVATION



Statewide website:
<https://handlewithcareok.org/>

How to advance
Handle With Care
Oklahoma in your
community?





HANDLE WITH CARE OKLAHOMA

PROTECT • HEAL • THRIVE

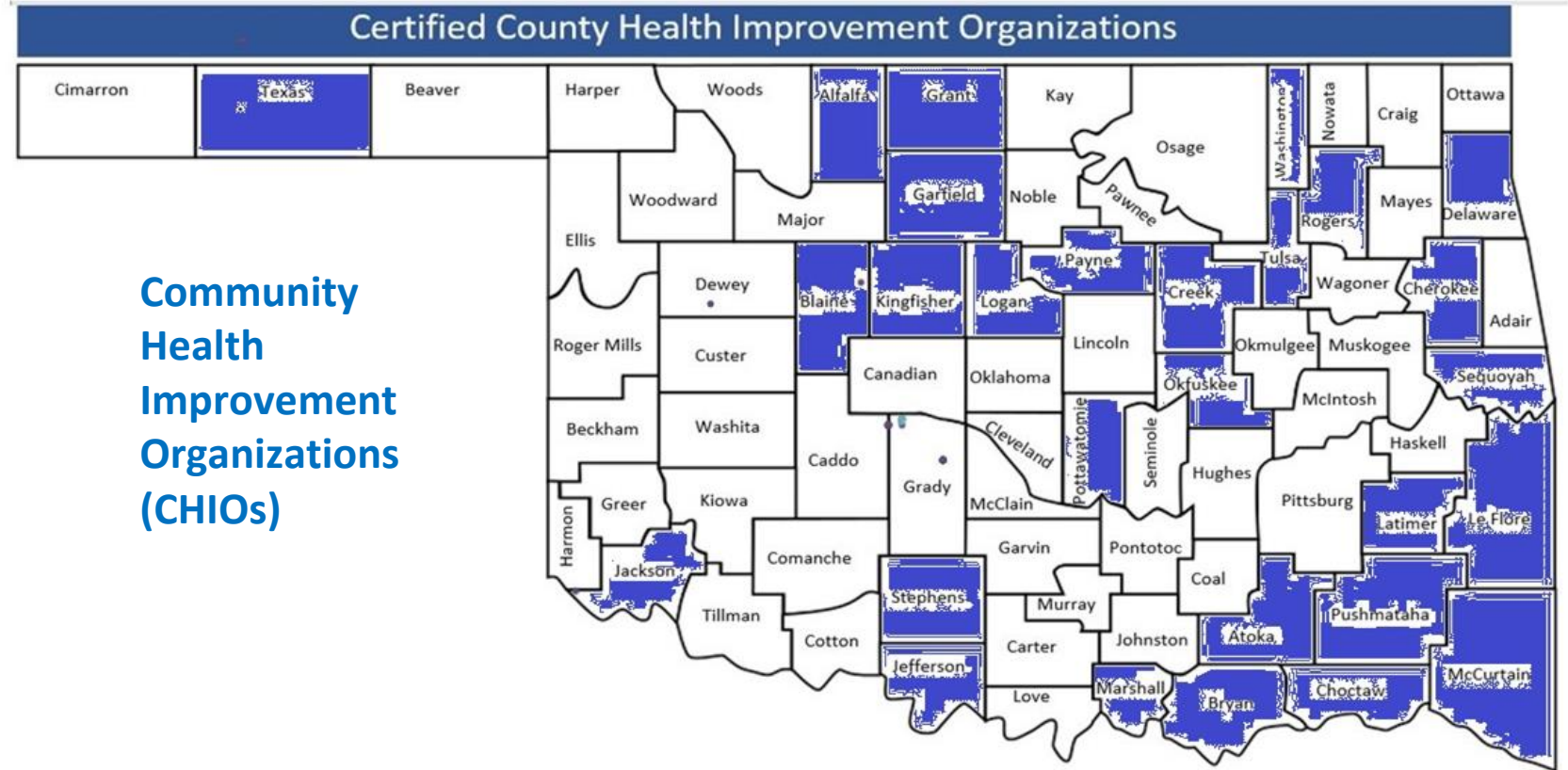
Public Health Institute of Oklahoma

Examples of Innovative Communities

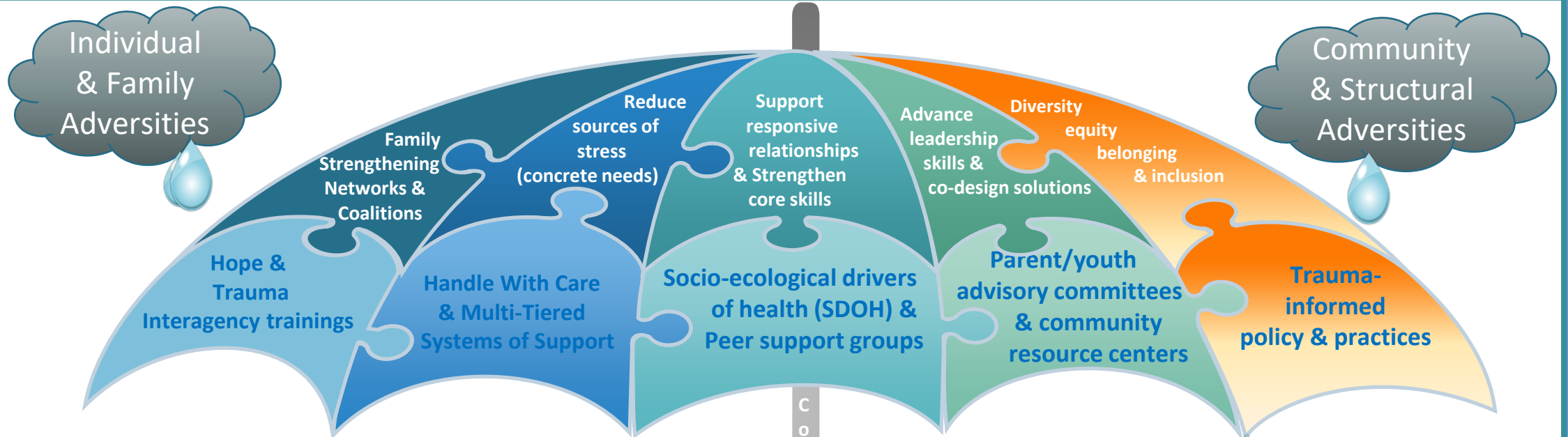


To learn more about CHIOs & apply, please visit:

<https://publichealthok.org/county-health-improvement-organizations/>



Community Health Improvement Organizations (CHIOs)



Umbrella of Relational Strategies:

A Relational, Cross-Sector, & Multi-level Framework for Removing Barriers and Strengthening Oklahoma Well-being with Families & Communities

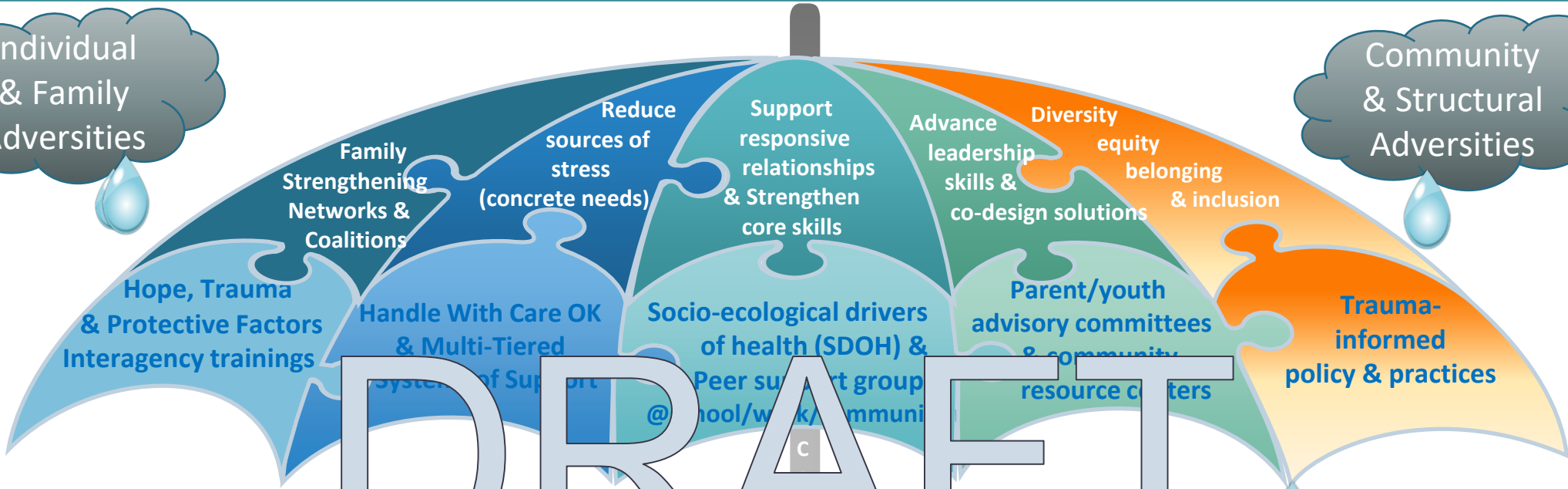


Public Health
Institute of
Oklahoma



© Public Health Institute of Oklahoma,
OK Parent Partnership Learning Community,
OK Turning Point Council & OSDH





DRAFT

Umbrella of Relational Strategies
 A Relational, Cross-Sector, & Multi-level Framework
 for Removing Barriers and Strengthening Oklahoma
 Well-being with Families & Communities

STRENGTHENING FAMILIES
Together



**Resilient
 Oklahoma**

Partners Supporting Integrated HWC Trainings that Enhance Existing School-Based Partnerships and Collaborative Efforts

Sector-Specific Training:

911 Dispatch Centers:	RB Hauf (RAVE)
Law Enforcement:	Gary Shelton (CLEET), Keith Stewart, Tenna Abraham (OK School Security Institute - Mission SOS)
Schools:	Sheri Fleming, Rachael Hernandez, Christi Sturgeon (OSDE Prevention/Safe & Healthy Schools)
Mental Health:	Brittany Couch & Cory Sutton (ODMHSAS - Behavioral Interventions and Support Services Schools & CIT)
Social Services:	Monica Brumnett & Heather Cristiano (OKDHS - School-based Specialists)
Health Services:	Karin Leimbach (OSDH - Whole School, Whole Community, Whole Child)
District Attorney:	Jennifer Crilly, Director of Training (DA Council)
Coalitions:	Robert Lee/Doug Ishmael (Evolution Foundation - Systems of Care Coalitions)

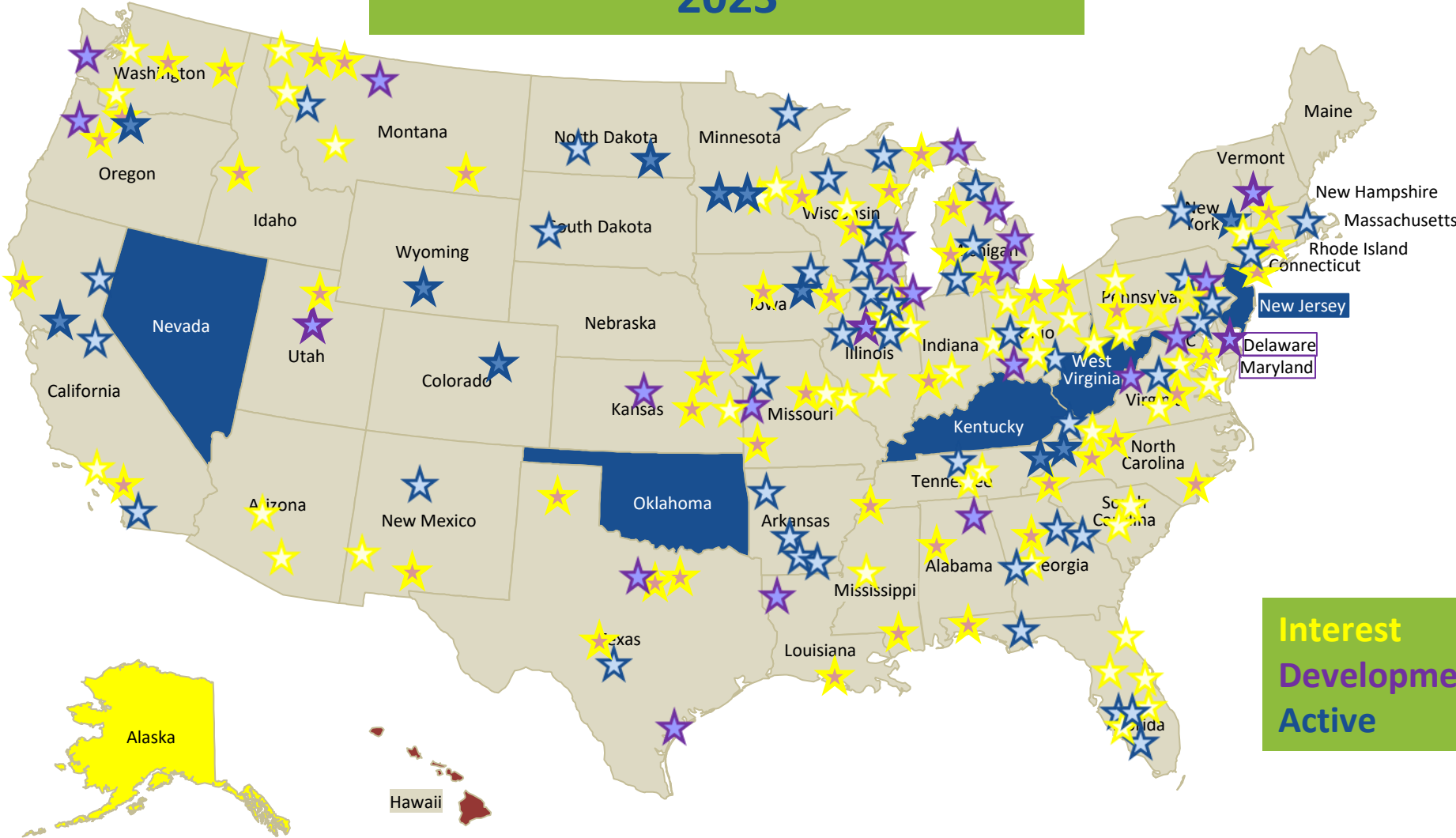
Monthly HWC OK Community Support Calls: (all are welcome)

1st Wednesday of the Month 10:00am – 11:00am

<https://us02web.zoom.us/j/84481751587> hosted by [Public Health Institute of Oklahoma](#)

[Calendar Series Invitation Link: Click Here](#)

Handle With Care 2023



Interest
Development Phase
Active

*Oklahoma is recognized as a top five state in the nation in creating a statewide HWC initiative

Partner Resource Sharing: Building Self-Healing Communities Free Resilience Film Screening & N.E.A.R. Science Training

THE LOGAN COUNTY PARTNERSHIP AND THE POTTS
FAMILY FOUNDATION INVITES YOU TO

RESILIENCE

THE BIOLOGY OF STRESS & THE SCIENCE OF HOPE

FILM SCREENING

FRIDAY, FEBRUARY 28TH
11AM - 1PM
COMMUNITY CHURCH
512 E. SEWARD ROAD GUTHRIE, OK

PANEL DISCUSSION LED BY
OKLAHOMA'S FIRST LADY
SARAH STITT

ADMISSION IS FREE BUT
REGISTRATION IS REQUIRED

REGISTER AT: WWW.EVENTBRITE.COM/E/RESILIENCE-FILM-SHOWING-TICKETS-94668499029
Co-SPONSORS: @OK25BY25 AND @POTTSFAMILYFDN



Potts Family Foundation



ACE Interface

Understanding
N. E. A. R.

Neuroscience
Epigenetics
Adverse Childhood Experiences
Resilience

Website: <https://www.pacesconnection.com/g/raising-resilient-oklahomans>

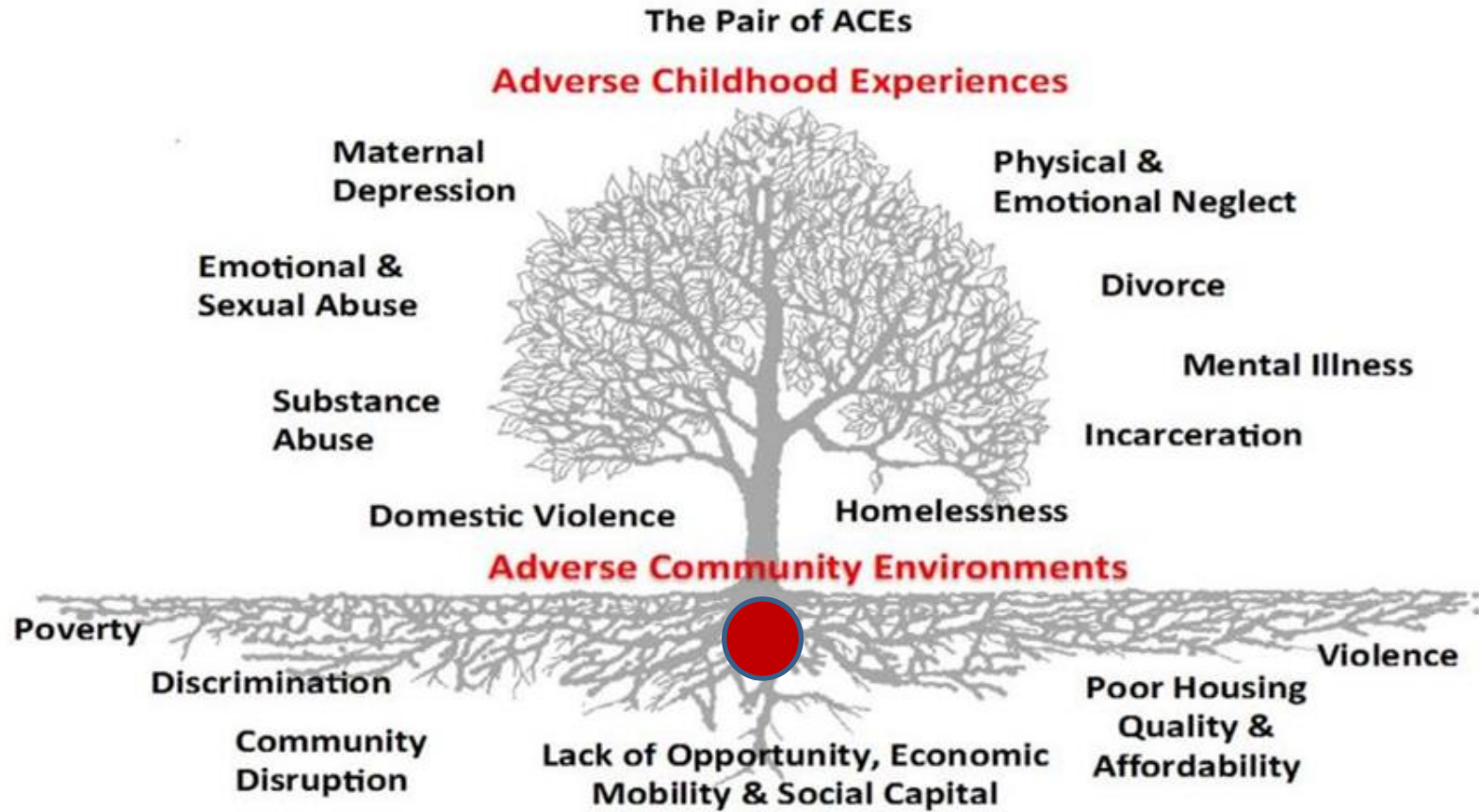
Email to request free Resilience Film or NEAR Science training: nearok@okstate.edu

Monthly virtual meetings - 4th Thursdays at 10am - [Register Here](#) for zoom link


Learning about adversity and increasing empathy, increases opportunities for communities to connect children and families to resources as needed.



What is the root cause of generational adversities and health inequities?



Ellis, W., Dietz, W. (2017) A New Framework for Addressing Adverse Childhood and Community Experiences: The Building Community Resilience (BCR) Model. *Academic Pediatrics*. 17 (2017) pp. S86-S93. DOI information: 10.1016/j.acap.2016.12.011

 = The seed of generational adversity is the prolonged activation of stress response systems in the absence of protective relationships; toxic stress; relational poverty.

3 Realms of ACEs

Adverse childhood and community experiences (ACEs) can occur in the household, the community, or in the environment and cause toxic stress. Left unaddressed, toxic stress from ACEs harms children and families, organizations, systems and communities, and reduces the ability of individuals and entities to respond to stressful events with resiliency. Research has shown that there are many ways to reduce and heal from toxic stress and build healthy, caring communities.




PACEs Connection thanks **Building Community Resilience Collaborative and Networks** and the **International Transformational Resilience Coalition** for inspiration and guidance. Please visit [PACEsConnection.com](https://www.pacesconnection.com) to learn more about the science of ACEs and join the movement to prevent ACEs, heal trauma and build resilience.

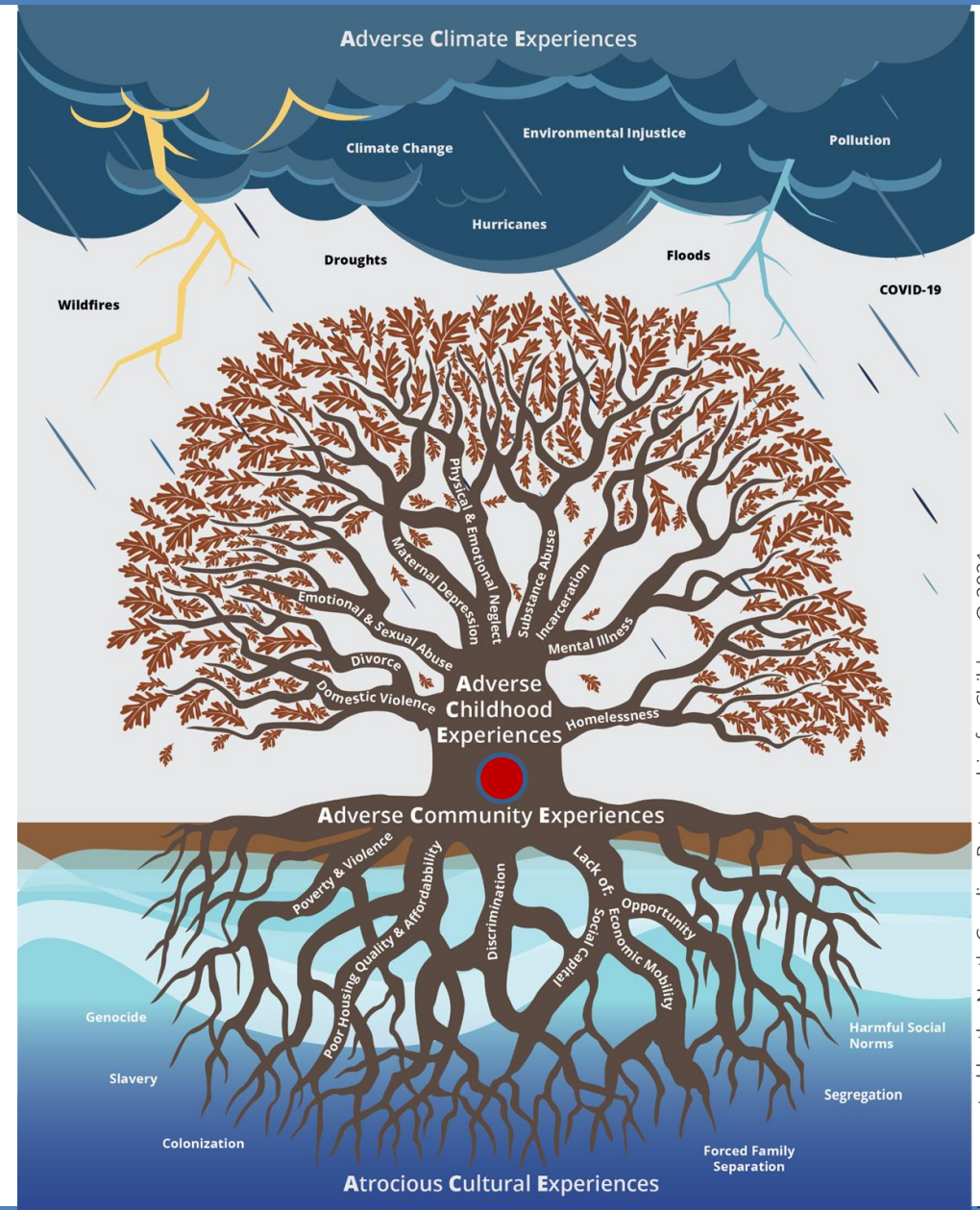
PACEs Connection

● = The seed of generational adversity is the prolonged activation of stress response systems in the absence of protective relationships; toxic stress; relational poverty.

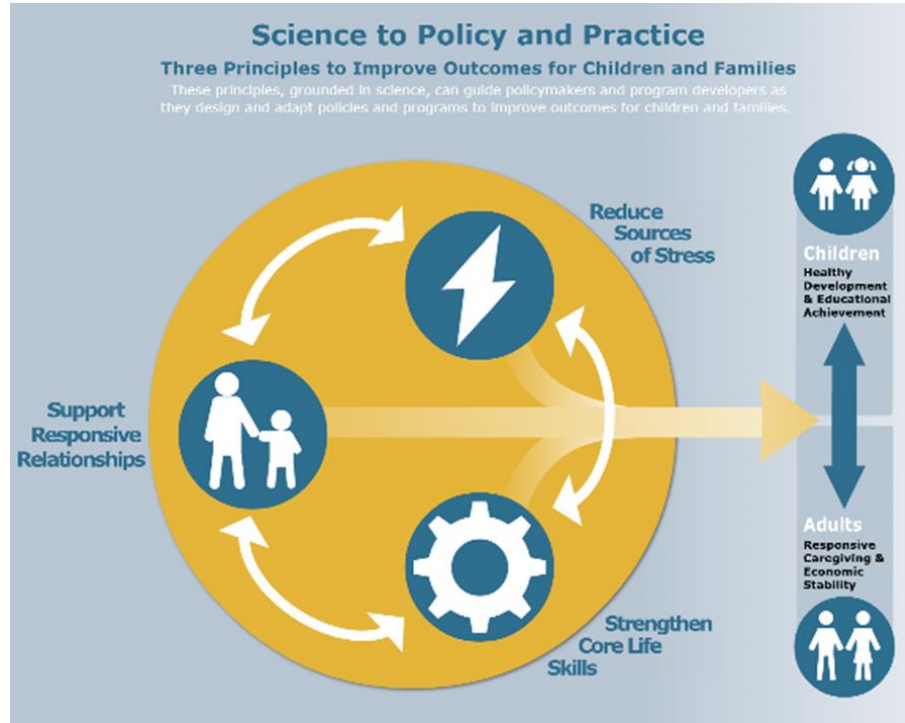
Adversity consists of a wide range of experiences or conditions that threaten the health and well-being of children, families, and communities.

Like resilience, adversity occurs **across all levels of the social-ecological model**. The understanding of adversity and its impacts on health and well-being continue to grow.

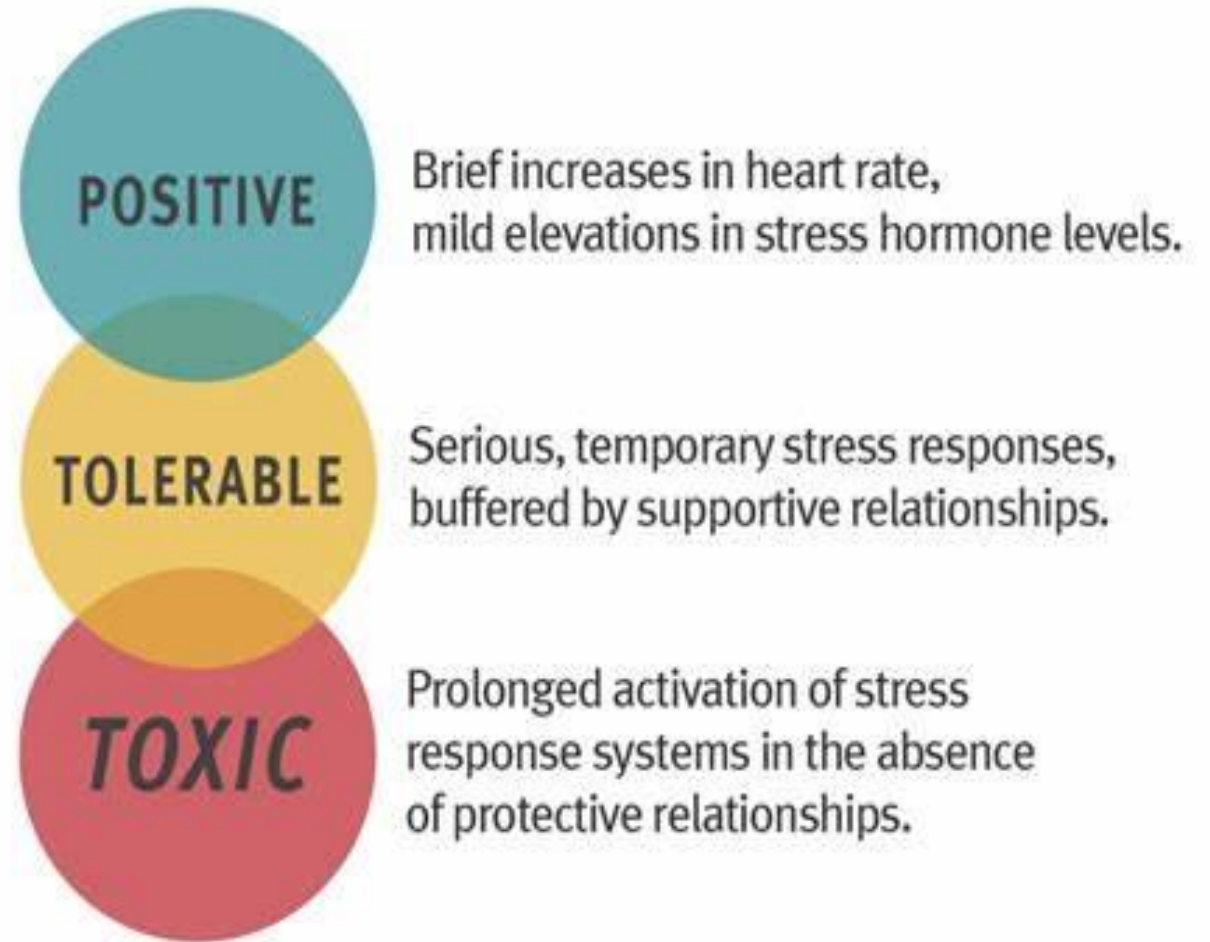
 = The seed of generational strength is the reduction of the stress response systems through protective relationships; buffering supports; relational health



Buffering Supports turn Toxic Stress to Tolerable Stress



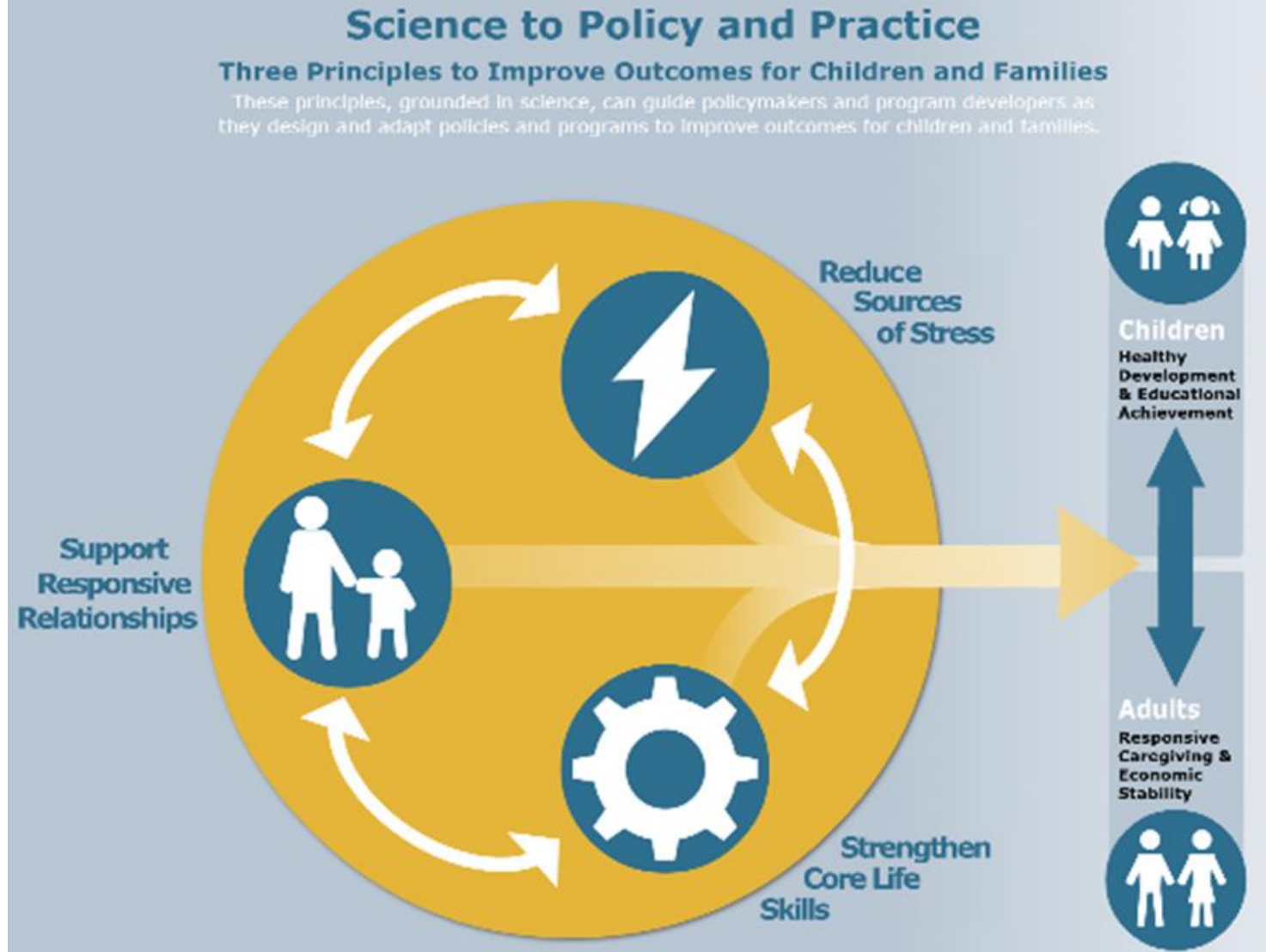
Source: Harvard's Center on the Developing Child



Science to Policy and Practice:

Three Principles to Improve Outcomes with Children and

|

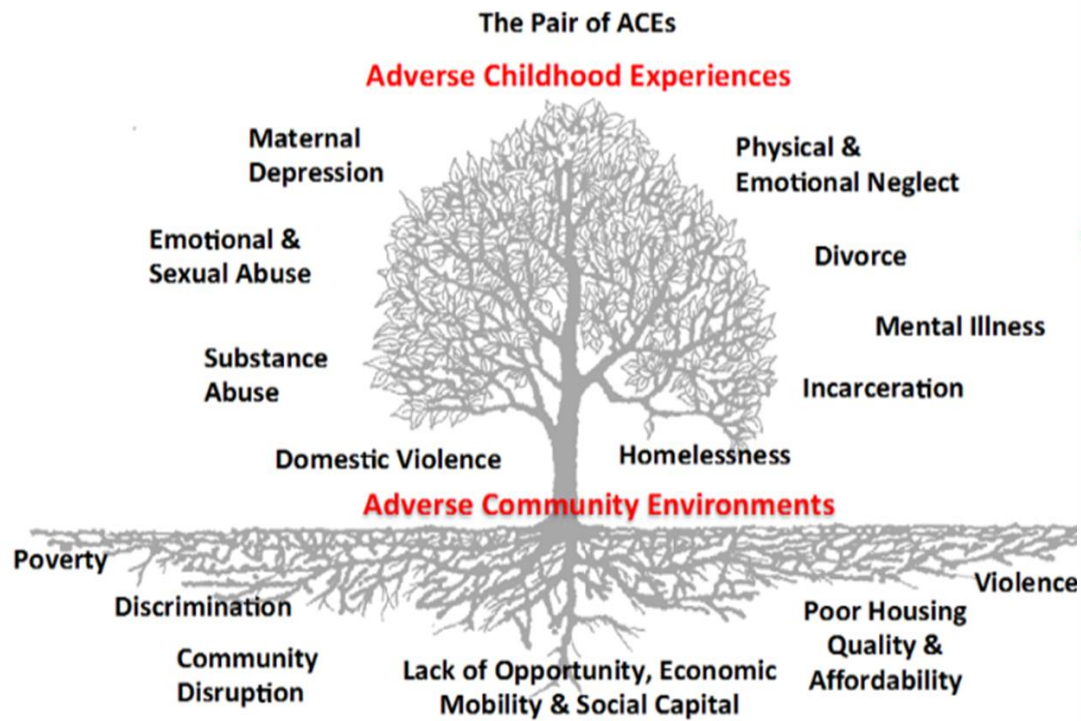


Relational Mapping: Local Solutions

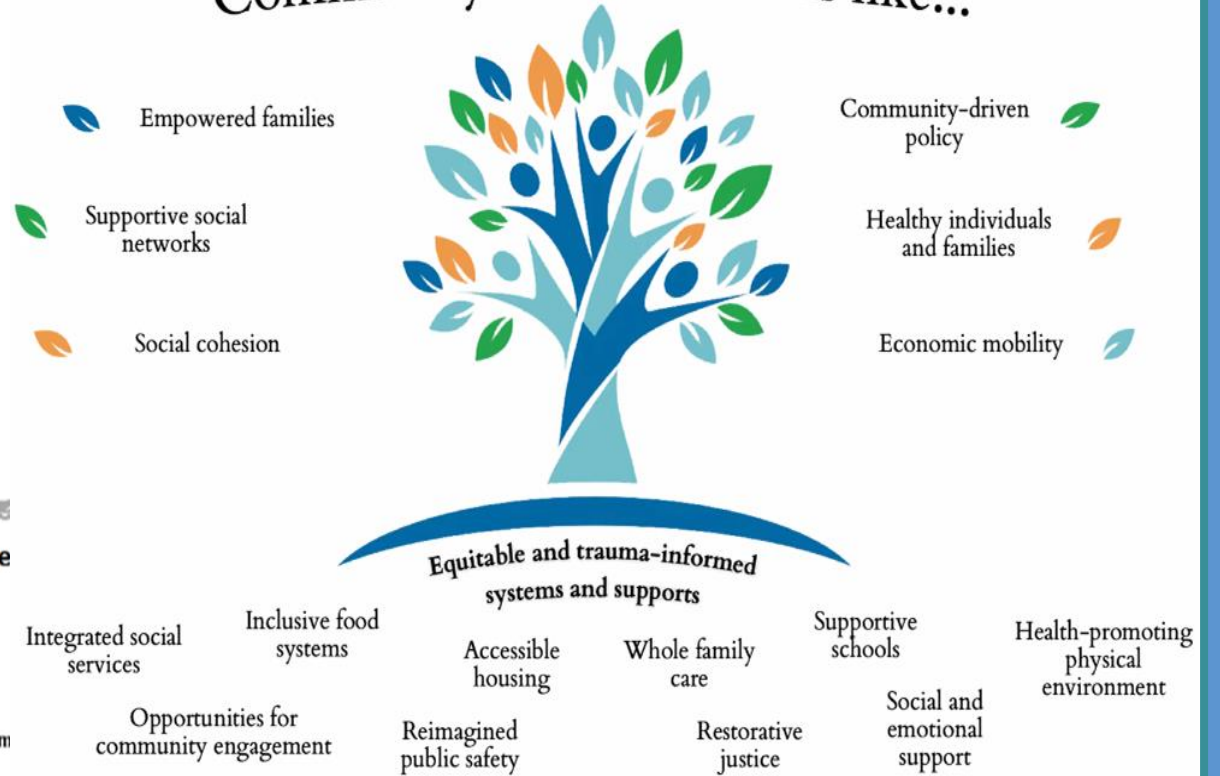
Community Health Improvement Organizations (CHIOs) and Systems of Care (SOC) Coalitions



Shared Vision:

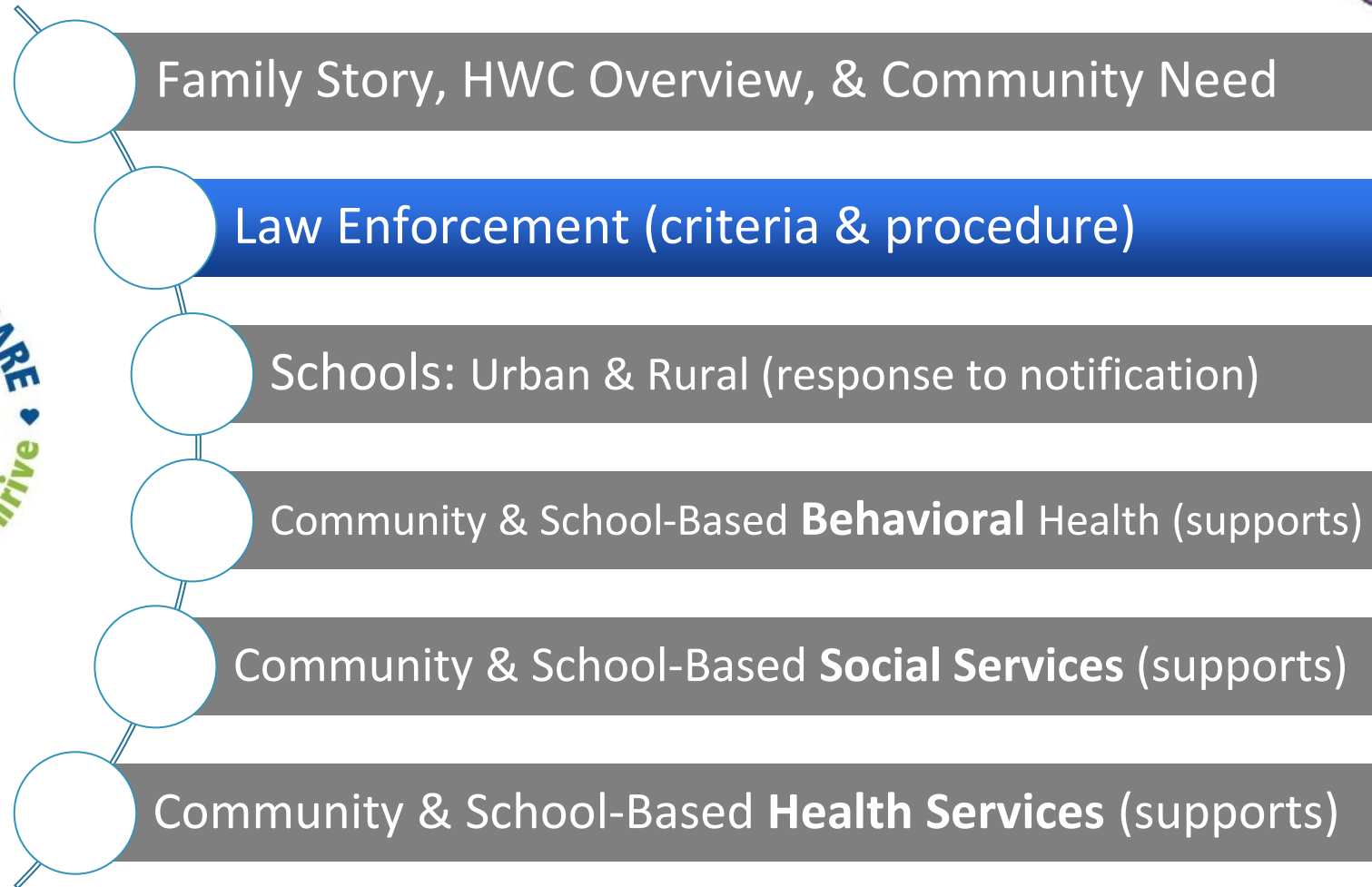


Community resilience looks like...



Ellis, W., Dietz, W. (2017) A New Framework for Addressing Adverse Childhood and Community Experiences: The Building Community Resilience (BCR) Model. *Academic Pediatrics*. 17 (2017) pp. S86-S93. DOI information: 10.1016/j.acap.2016.12.011

Interagency Roadmap: Handle With Care

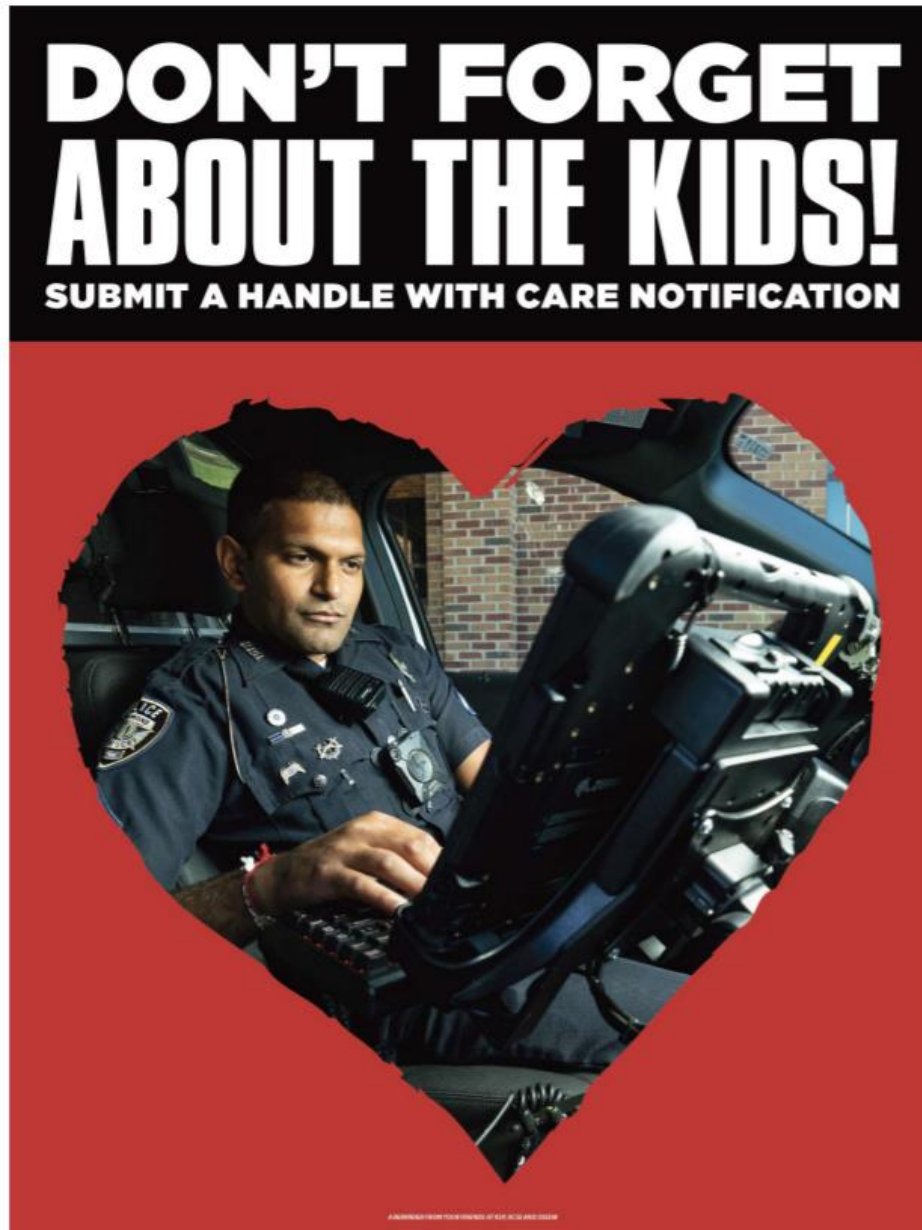


First responders often walk away from a 911 call wishing they could do more for the kids...

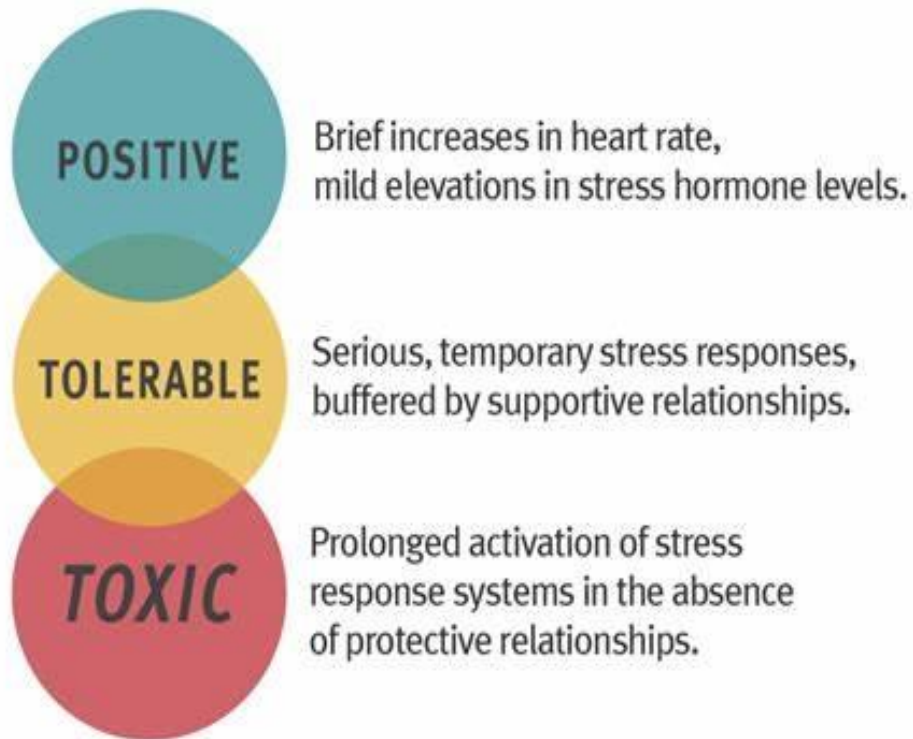
Other than a child welfare referral or the 988 Mental Health Lifeline
<https://988oklahoma.com/what-is-988/>



A HWC Notification “passes the baton” effectively



Multiple Positive Outcomes and Benefits:



Reduces Law Enforcement Contact

- **Absenteeism**
- **Suspension**
- **Expulsion**
- **Truancy**
- **Drop out**
- **Contact with the law**
- **Incarceration**



How does it work? HWC Notice Criteria:

Was a child/teen present at the scene?

Plain and Simple:

A child/teen present at the scene meets the criteria of sending a HWC Notice.



HWC Notice Procedure

For each child/youth, the Officer asks for

Name:

Age:

School:

The Officer sends an email to the designated school/county email:

“The child referenced has potentially experienced a traumatic event in the last 24 hours and could exhibit academic, emotional, and/or behavioral needs as a result of exposure to a traumatic event.

Please observe and handle him/her with care.

For more information, go to www.handlewithcareok.org”

**Sample Directive Policy and Sample MOUs available on website*



What does the HWC notice say?

HWC Notice Sample:

**Sample Directive Policy and Sample MOUs available on website*

Our community practices
Handle With Care
so all children can feel safe and learn.

HANDLE WITH CARE OKLAHOMA
PROTECT • HEAL • THRIVE

The "Handle With Care" approach enables first responders to start building trust and positive connections with kids/teens they encounter at a traumatic scene AND through a HWC notification, schools and mental healthcare leaders can provide trauma-sensitive support right away. Children must feel safe in order to learn.

HANDLE WITH CARE NOTICE:
FIRST RESPONDERS USE THIS EMAIL FOR _____ COUNTY
HANDLEWITHCARE@_____.COM

The child referenced below was on the scene of a first responder action in the last 24 hours and could exhibit academic, emotional, and/or behavioral problems as a result of exposure to a traumatic event.
Please handle him/her with care.

For more information, go to www.handlewithcareok.org and watch overview video: <https://vimeo.com/380526937>

Child's Full Name: _____ Age: ____ School: _____
Child's Full Name: _____ Age: ____ School: _____
Child's Full Name: _____ Age: ____ School: _____
Child's Full Name: _____ Age: ____ School: _____
Child's Full Name: _____ Age: ____ School: _____
Child's Full Name: _____ Age: ____ School: _____

CLICK HERE FOR FLOW CHART

Date of Incident: _____
Date of Email: _____



3 Simple Steps for Handle With Care



First Responder responds to a 911 call where a school-age child/teen is a victim, witness, or bystander to a serious crime, traffic accident, arrest, or other.



First Responder makes a HWC notification via e-mail to school/child care agency: three words “Handle With Care” along with the name, age and school are included.



School district/daycare helps provide trauma-sensitive interventions, counseling and/or social services to student in crisis, the following school day, as needed.

Video for Law Enforcement: “Safeguarding Children of Arrested Parents”



OKLAHOMA SHERIFFS' ASSOCIATION
TRAINING • TECHNOLOGY • TRADITION



OKLAHOMA
Department of Public Safety



Source:

<https://handlewithcaremd.org/law-enforcement-protocol.php>

https://www.youtube.com/watch?time_continue=386&v=ir2xA6XniSA&feature=emb_logo

Resources for Oklahoma Law Enforcement: Oklahoma School Security Institute (OSSI)

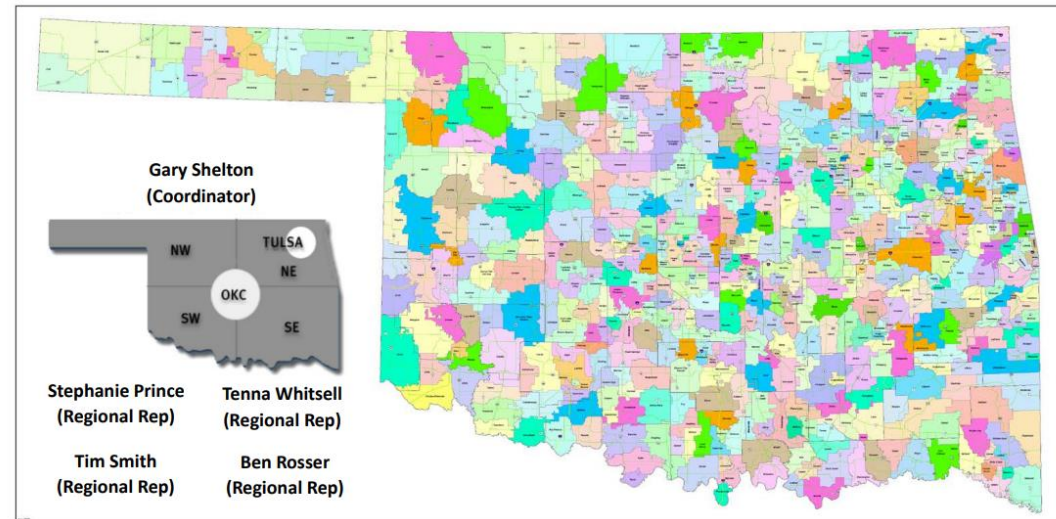


Oklahoma School Districts 2020

Public, Charter, CareerTech Stats

Approx 695,000 students
Over 1800 Educational sites
Nearly 70,000 square miles

Council on Law Enforcement
Education and Training



Email OSSI, Keith Stewart: keith.stewart@dps.ok.gov

Website: <https://oklahoma.gov/homeland-security/school-security/training.html>

Enroll: <https://oklahoma.gov/homeland-security/school-security/training/training-catalog.html>

Resources for Oklahoma Law Enforcement: Crisis Intervention Training (CIT)

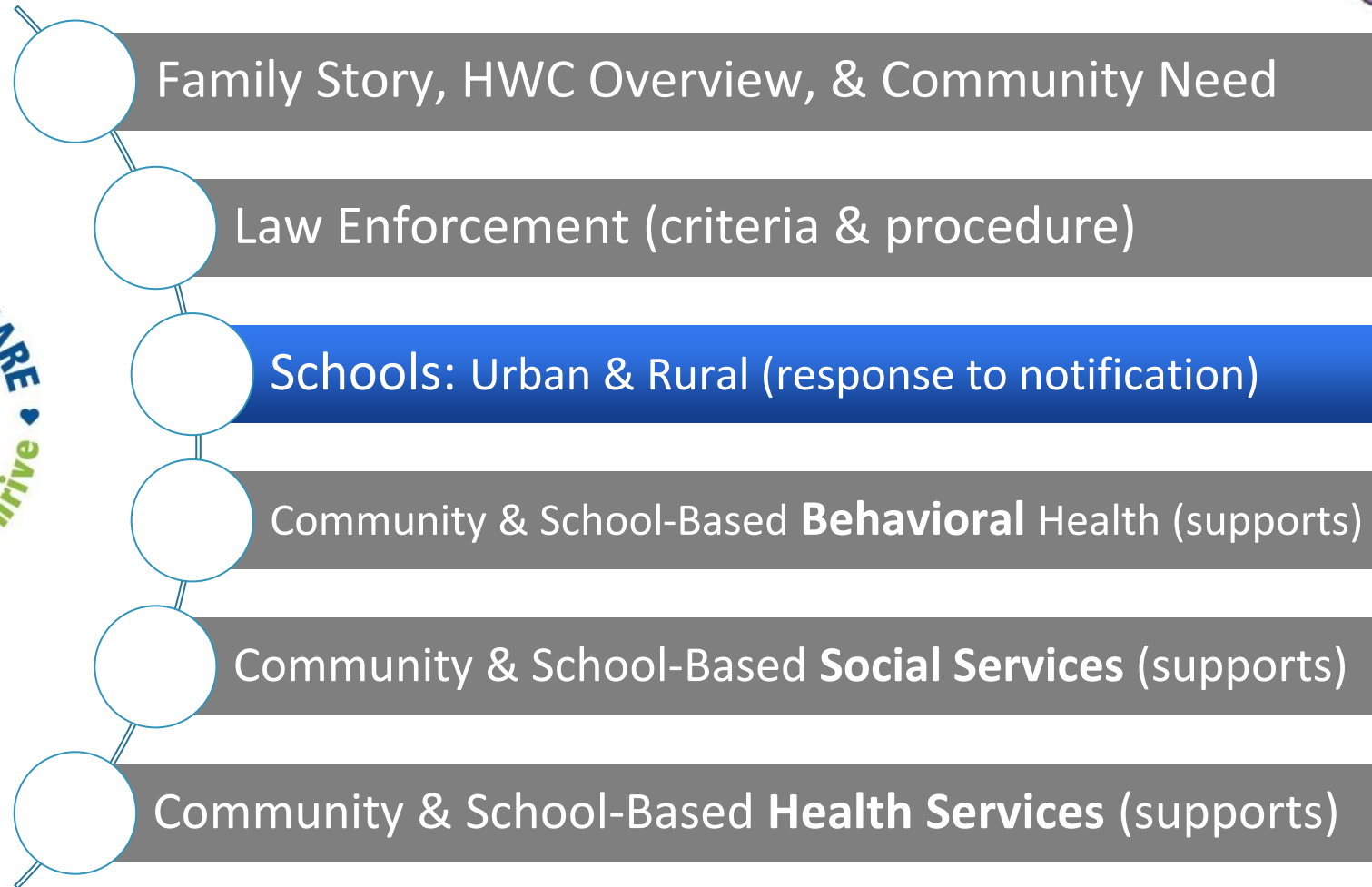


Email CIT Trainer, Cory Sutton: cory.sutton@odmhsas.org

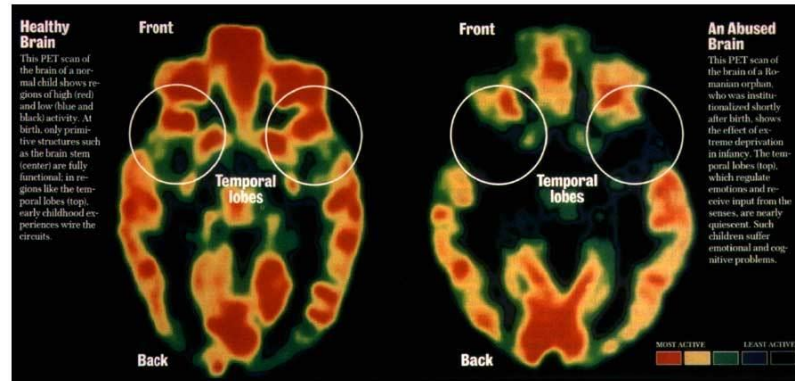
Website : <https://oklahoma.gov/odmhsas/recovery/criminal-justice/cit.html>

Enroll: [https://www.ok.gov/cleet/CLEET_Training/Continuing_Education - Classroom Training/](https://www.ok.gov/cleet/CLEET_Training/Continuing_Education_-_Classroom_Training/)

Interagency Roadmap: Handle With Care



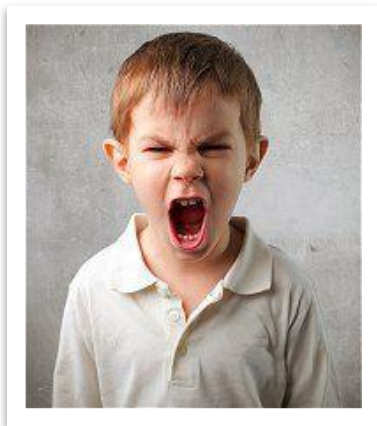
What happens when a child has unaddressed trauma?



Turns off the learning switch!

What does that look like in the classroom? Childhood Trauma and Classroom Behavior

A traumatized child sees the world as a dangerous place, including the school. Unfortunately, many adopt behavioral coping mechanisms that can frustrate educators and evoke exasperated reprisal.



Reactivity
Impulsivity
Aggression
Defiance
Withdrawal
Perfectionism



How Can Schools Respond to HWC Notifications?

Individual Interventions

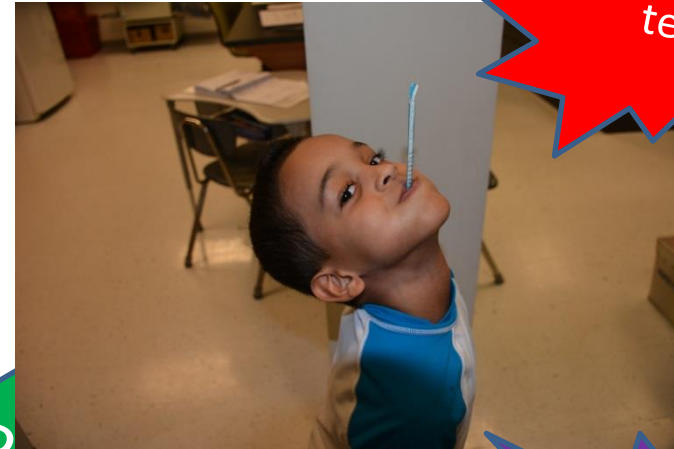


90% of children who have a Handle With Care notice can be supported with simple interventions, like snack/change of clothes/rest.

School Response to HWC Notification: Individual Academic Interventions



Rest



Postpone testing



IEP

Retesting

School Response to HWC Notification: School Interventions

Thumbs Up



LE visiting
classroom

Therapy Dogs



School Response to HWC Notification: Building Relationships with Law Enforcement





OKLAHOMA
Education



Building Safe and Healthy Schools:

“Schools play a critical role in promoting the health of young people and helping them establish lifelong healthy behaviors. Research shows that healthy schools can help improve students' academic performance and overall health. Our goal is to serve the whole child, including strategies and resources for all students to be safe, healthy, challenged, engaged, and supported.”

School Resources:

<https://sde.ok.gov/school-safety-and-security>

<https://sde.ok.gov/safe-and-healthy-schools>

<https://sde.ok.gov/counseling>

<https://sde.ok.gov/ok-aware>

<https://sde.ok.gov/school-based-mental-health>





OKLAHOMA
Education

21st Century Community Learning Centers

The Title IV, Part B - 21st Century Community Learning Centers program assists students attending high-poverty, low-performing schools in meeting academic standards in core subjects by providing services to students and their families during out-of-school hours.

<https://sde.ok.gov/21cclc>



Map Pin Legend

Green	1st year grantees	Cohort 20	2022-2027
Blue	2nd year grantees	Cohort 19	2021-2026
Purple	4th year grantees	Cohort 18	2019-2024
Red	5th year grantees	Cohort 17	2018-2023



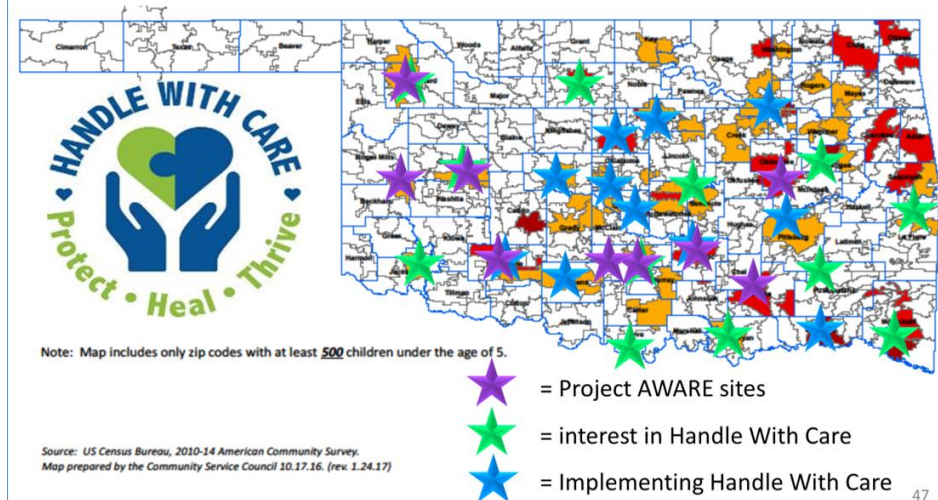
OKLAHOMA
Education



OKAware
OKLAHOMA STATE DEPARTMENT OF EDUCATION
PROJECT AWARE

The purpose of the AWARE grant is to build or expand the capacity of State Educational Agencies in partnership with State Mental Health Agencies and Local Education Agencies to 1) increase awareness of mental health issues among students 2) provide training to school personnel and other adults who interact with students to detect and respond to mental health issues; and 3) connect students, who may have behavioral health issues, serious emotional disturbance or serious mental illness, and their families to needed services.

Project AWARE sites in Oklahoma



<https://sde.ok.gov/aware-goals-and-objectives>

School Response to HWC Notification: What is a Trauma Sensitive School?

A trauma-sensitive school is one in which:

- All students feel safe, welcomed, and supported;
- Addressing trauma's impact on learning on a school-wide basis is at the center of its educational mission;
- A place where an on-going, inquiry-based process allows for the necessary teamwork, coordination, creativity and sharing of responsibility for all students; and
- Where continuous learning is for educators as well as students.

Benefits to Trauma Sensitive School
(Oehlberg, 2008)

- Improved academic achievement and test scores.
- Improved teacher sense of satisfaction and safety in being a teacher.
- Improved retention of new teachers.
- Reduction of student behavioral outburst and referrals to the office.
- Reduction of stress for staff and students.
- Reduction in absences, detentions, and suspensions.
- Reduction in student bullying and harassment.

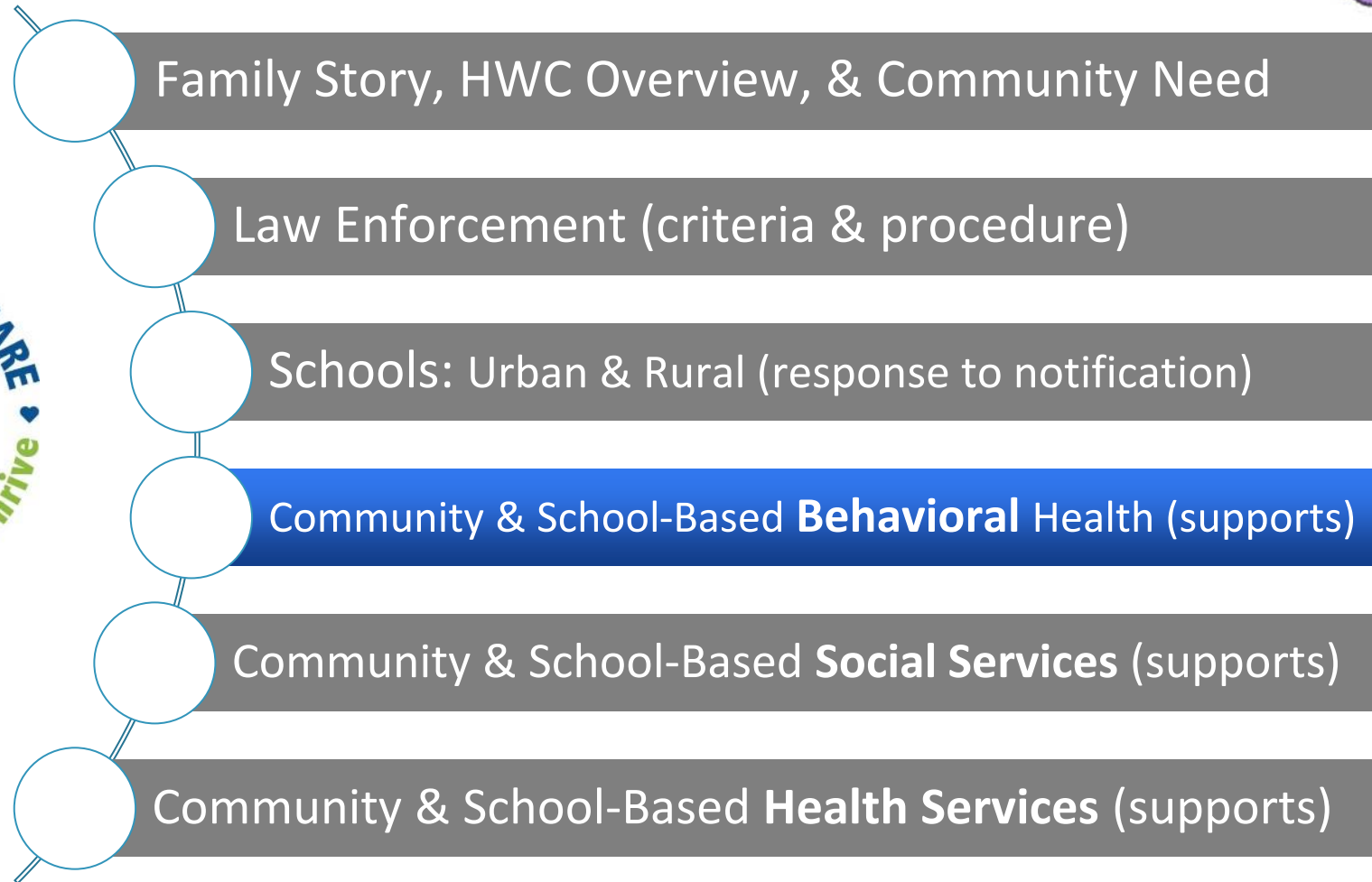
Resource: <https://safesupportivelearning.ed.gov/resources/trauma-informed-classrooms>



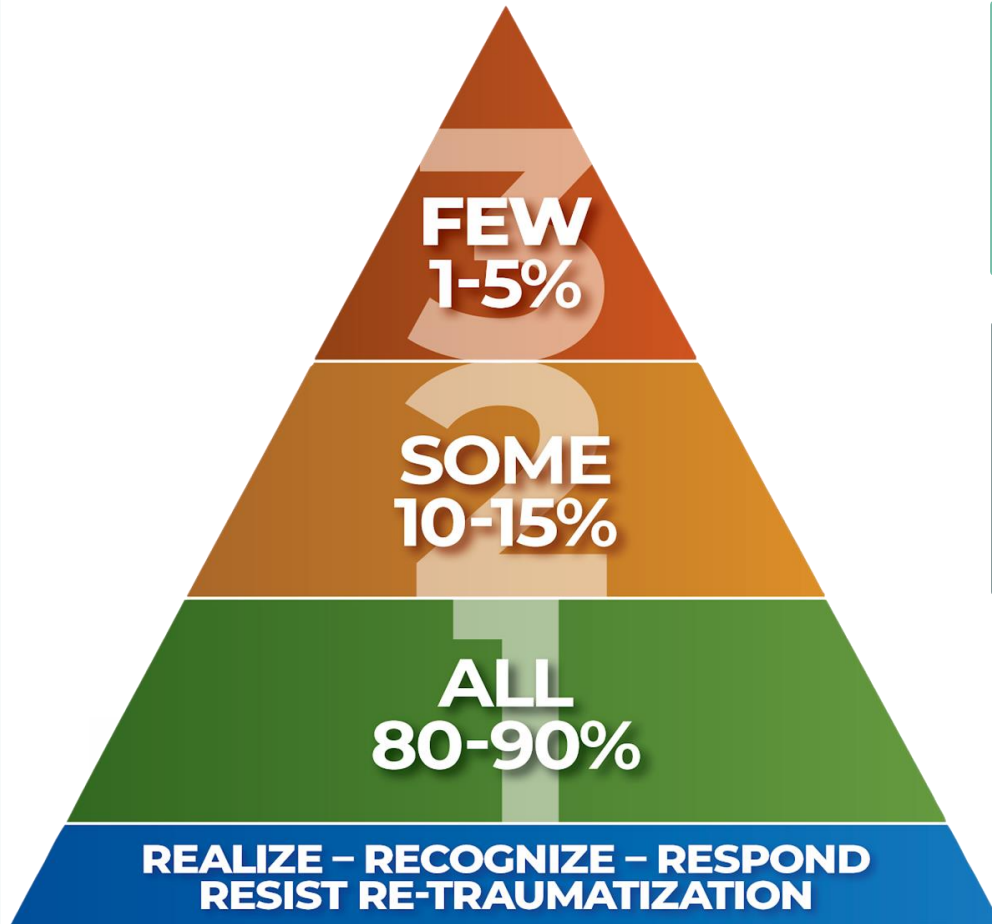
- A program aimed at ensuring that children (birth to 18 years) who are exposed to violence receive appropriate interventions so they can **succeed in school to the best of their ability.**

FOCUS BEHAVE APPROPRIATELY LEARN

Interagency Roadmap: Handle With Care



Multi-Tiered Systems of Support (MTSS) Approach:



Individualized Interventions

Few individualized, assessment-based
Intense, durable supports for high-risk behaviors

Targeted Interventions

Some identified as at-risk,
high efficiency, rapid response

Universal Supports

All settings.
Focus on prevention



HANDLE WITH CARE OKLAHOMA

PROTECT • HEAL • THRIVE

Process Flow Chart

[Click here for Overview Video](#)

www.handlewithcareok.or



Children or teens are present at a traumatic event.

First responders on the scene identify each child/teen. Find out name, age, name of school/ daycare. This information is emailed directly to school/daycare OR reposted back to 911 dispatch.

911 Dispatch
911 Dispatch will contact designated school /daycare personnel and provide initial information through a Handle With Care notice. No details about the nature of the event are provided; only the child's name, age and "Handle With Care" are given.



SCHOOL DISTRICT
The designated school personnel will then ensure notification is provided to the child's teachers and support personnel.

TEACHING STAFF & SCHOOL PERSONNEL
Provide:
Classroom Interventions
Awareness
Observation and/or Support

SCHOOL COUNSELOR, SOCIAL WORKER OR NURSE
Provides assessment and/or interventions

If Additional Support **IS** Needed

If Additional Support Is **NOT** Needed

If Additional Support **IS** Needed

If Additional Support Is **NOT** Needed

Continue to monitor and support as needed.

MENTAL HEALTH THERAPIST
Provides on-site therapy with parental consent

Continue to monitor and support as needed.

Continue with typical classroom activities



OKLAHOMA
Mental Health &
Substance Abuse

Statewide mental health supports for schools:

“Recently the Oklahoma State Legislature passed [HB4106](#), which increases school-based partnerships between Certified Community Behavioral Health Centers (CCBHCs), certified ODMHSAS providers and school districts.

Currently, the ODMHSAS and the State Department of Education are working to establish guidelines to support local partnerships between CCBHC’s, certified ODMHSAS providers and school districts.”

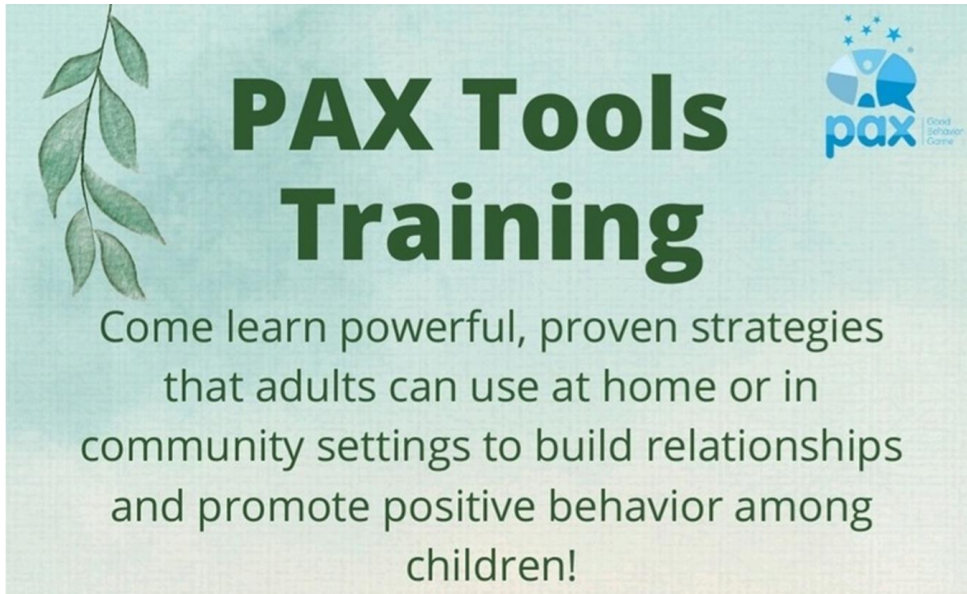
Sample MOU: <https://oklahoma.gov/content/dam/ok/en/odmhsas/documents/treatment/cyf/soc/MOU-Sample-HB4106.pdf>

Email: Sr. Manager of School Based Initiatives – Mr. Butler: Marqus.Butler@odmhsas.org
Sr. Prevention Programs Field Representative - Mrs. Brandi Gaither: brandi.gaither@odmhsas.org



OKLAHOMA
Mental Health &
Substance Abuse

School-Based Prevention Services

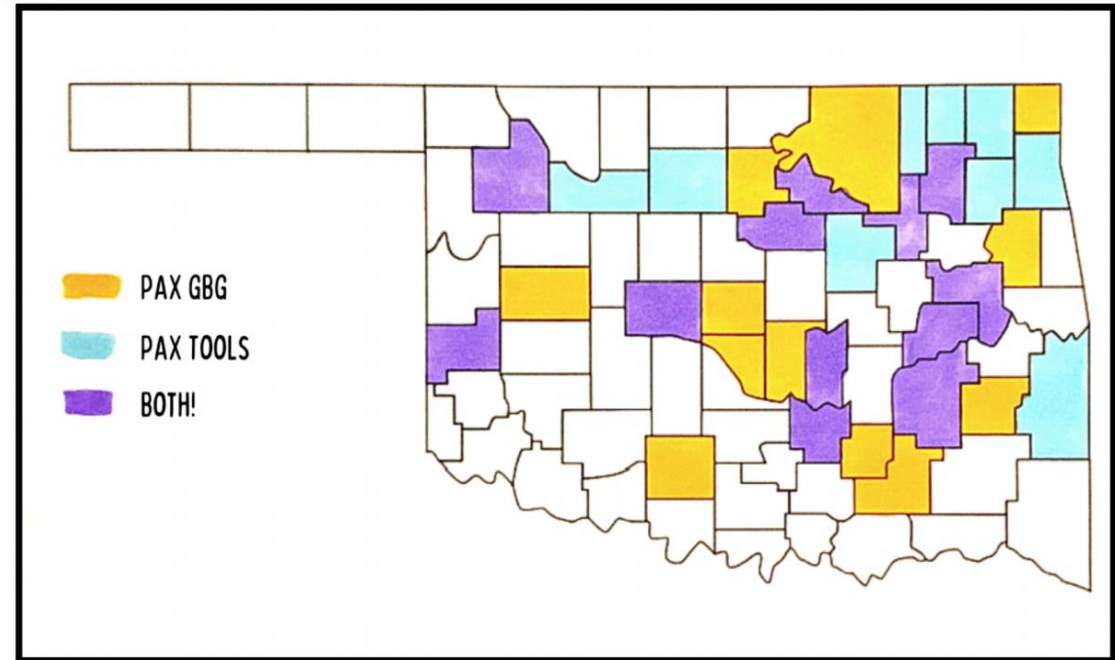


PAX Tools Training

Come learn powerful, proven strategies that adults can use at home or in community settings to build relationships and promote positive behavior among children!



OKLAHOMA PAX REACH BY COUNTY (2015-PRESENT)





OKLAHOMA
Mental Health &
Substance Abuse

Behavioral Intervention Services and Supports (BISS) in Schools

BISS works with local school administrators (teachers, principals, and school-based counselors) to support the emotional needs of youth, and provide educators with training to encourage and promote positive classroom behavior.

BISS is currently being implemented in 90 school sites across the state, with more sites being added each school year.

Website: <https://oklahoma.gov/odmhsas/treatment/children-youth-treatment-services/systems-of-care.html>

BISS is the **flagship school-based project** for the ODMHSAS **Systems of Care Initiative**.



Interagency Roadmap: Handle With Care



- Family Story, HWC Overview, & Community Need
- Law Enforcement (criteria & procedure)
- Schools: Urban & Rural (response to notification)
- Community & School-Based **Behavioral** Health (supports)
- Community & School-Based **Social Services** (supports)
- Community & School-Based **Health Services** (supports)

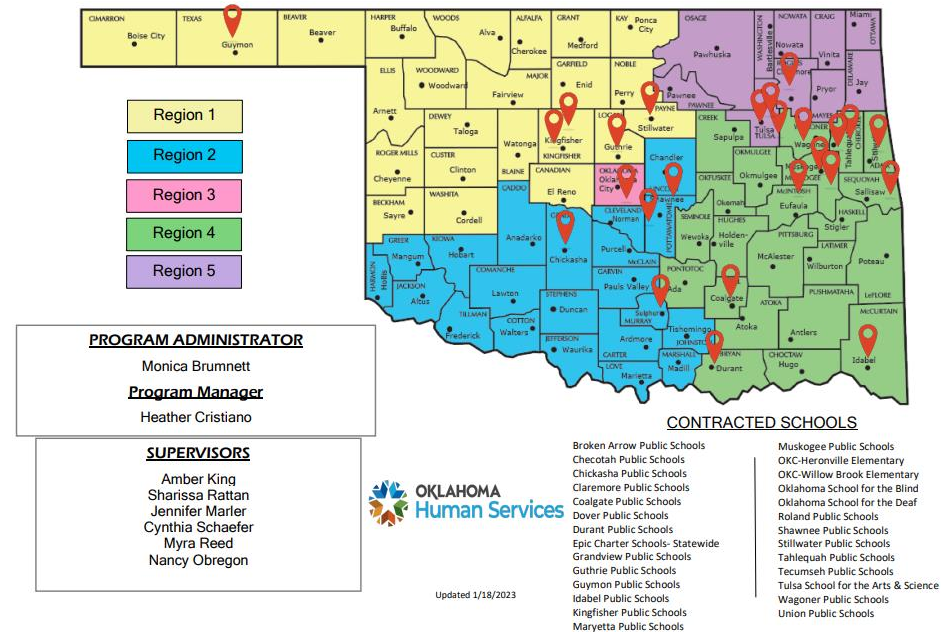


OKLAHOMA Human Services

Through the partnership, a **School-Based Specialist (SBS)** is placed in the school with the dedicated purpose of providing a human service connection and support to the children and families served by the school, as well as the school's teachers and administrators.

OKDHS Partnerships: School-Based Services

SCHOOL BASED SERVICES REGIONS AND DISTRICTS



Website: <https://oklahoma.gov/okdhs/services/foster/schoolbasedservices/sbshome.html>

Application: <https://oklahoma.gov/okdhs/services/foster/schoolbasedservices/application.html>



OKLAHOMA
Human Services

OKDHS Partnerships: School-Based Services

The SBS connects students and their families to local and state resources that can offer help and hope for the family.

This compassionate and professional support helps students navigate out-of-classroom obstacles that would affect their success in the classroom and allows teachers to focus on teaching.

The SBS makes a significant impact on the well-being of their communities, improving outcomes and reducing risk factors for the students and families they serve.

Are you OK? Oklahoma CARES: Call 211



Disability Services



Crisis Lines/
Helplines



Utility / Rent



Housing / Shelter



Food / Meals



Clothing /
Household Items



Health / Dental
Family Planning



Mental Health
Substance Use
Treatment



Legal Assistance
Law Enforcement



Employment /
Income Assistance



Violence Prevention
Public / Community
Services



Family / Parent
Guardian Support



Support Groups



Schools / Adult Education



Transportation



Disaster Services

Many things in life can leave a person in crisis, isolated and feeling overwhelmed: disease outbreak, aftermath of a storm, loss of a job, abuse at home, mental health struggles, bills higher than earnings.

You Are Not Alone Anymore.

Talk to Someone Who Cares & Knows Where to Go for Help.

CALL [211](tel:211) HEARTLINE NOW.

TEXT YOUR ZIP CODE TO [898-211](tel:898211)

We provide compassionate, non-judgmental listening, as well as resources and support to get you on your feet.



Youth Helpline:
1-833-885-CARE (2273)

Parent Helpline:
1-877-271-7611

Need to Talk?
1-800-273-TALK (8255) or 988

Emergency: Dial 911

Like these resources?
Please take a picture & share with a friend.
If friend is in need, request consent & call together on speaker.



¿Estás OK? Oklahoma le IMPORTAS: Llama al 211



Servicios para discapacitados



Líneas de ayuda en crisis / Líneas de ayuda



Servicios / Renta



Vivienda / Refugio



Comida / Alimentos



Ropa / Artículos para el hogar



Salud / Dental
Planificación familiar



Salud mental / Tratamiento en el uso de sustancias



Asistencia legal / Cumplimiento de la ley



Empleo / Asistencia con ingresos



Prevención de la violencia
Servicios públicos / Comunitarios



Apoyo familiar / para padres



Grupos de apoyo



Escuelas / Educación para adultos



Transporte



Servicios en caso de desastre

Muchas cosas en la vida pueden dejar a una persona en crisis, aislado, abrumado: brote de enfermedad, los daños después de una tormenta, la pérdida del empleo, abuso en el hogar, problemas de salud mental, las facturas más altas que el sueldo.

Ya no estás solo(a).

Habla con alguien que se preocupa y sabe dónde buscar ayuda.

LLAMA AL **211** HEARTLINE AHORA
ENVÍA TU CÓDIGO POSTAL POR MENSAJE DE TEXTO AL **898-211**

Brindamos un oído para escuchar con compasión y sin prejuicios, así como recursos y apoyo para que pueda recuperarse.



Línea de ayuda para jóvenes:

1-833-885-CARE (2273)

Línea de ayuda para padres de familia:

1-877-271-7611

¿Necesito hablar?: 1-800-273-TALK (8255) or 988

Emergencia: Marca **911**

¿Te gustan estos recursos?

Tómales una foto y compártelos con una amistad.
Si un amigo necesita una petición consentimiento y convoca en alavoz.

¿Quieres ayudar y devolver?
Voluntario con **211** o a caridad local.



Interagency Roadmap: Handle With Care



- Family Story, HWC Overview, & Community Need
- Law Enforcement (criteria & procedure)
- Schools: Urban & Rural (response to notification)
- Community & School-Based **Behavioral** Health (supports)
- Community & School-Based **Social Services** (supports)
- Community & School-Based **Health Services** (supports)



OKLAHOMA
State Department
of Health



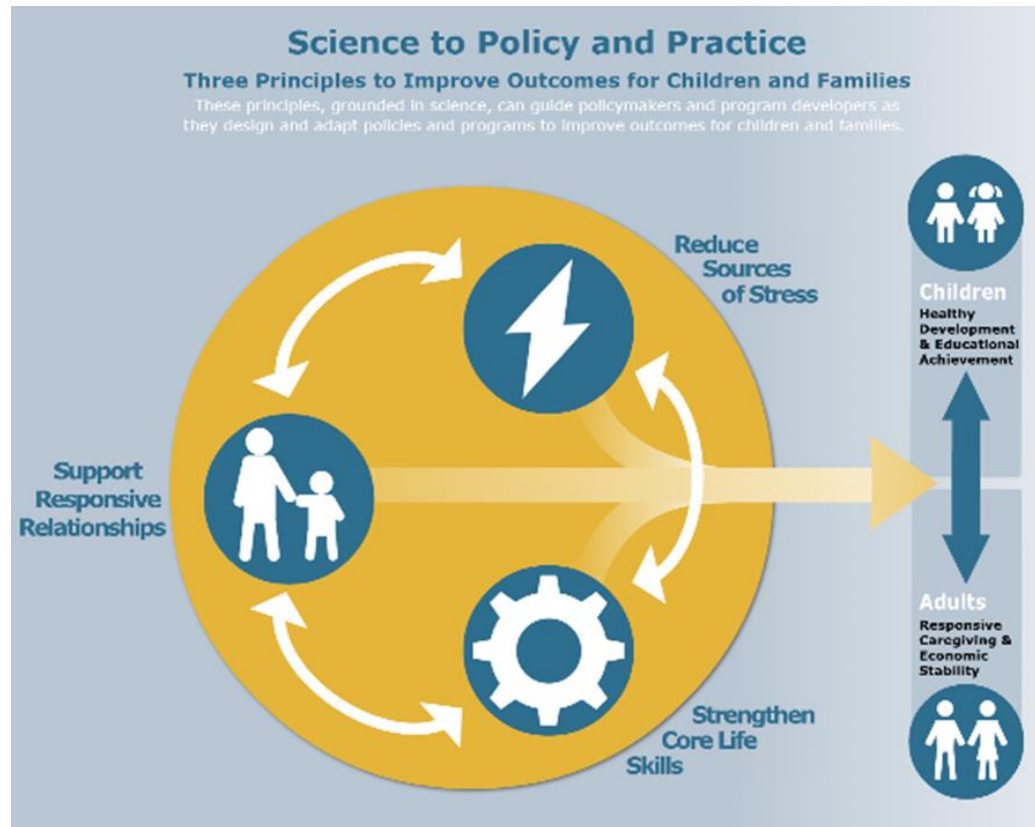
OSDH Community Outreach: Healthy Schools Whole School, Whole Community, Whole Child (WSSCC)

“Students are most influenced to lead healthy and productive lives when the schools, parents, and other community groups work collaboratively. Each of these groups has unique roles for accessing students, identifying and sharing resources, and impacting health behaviors of children and youth.

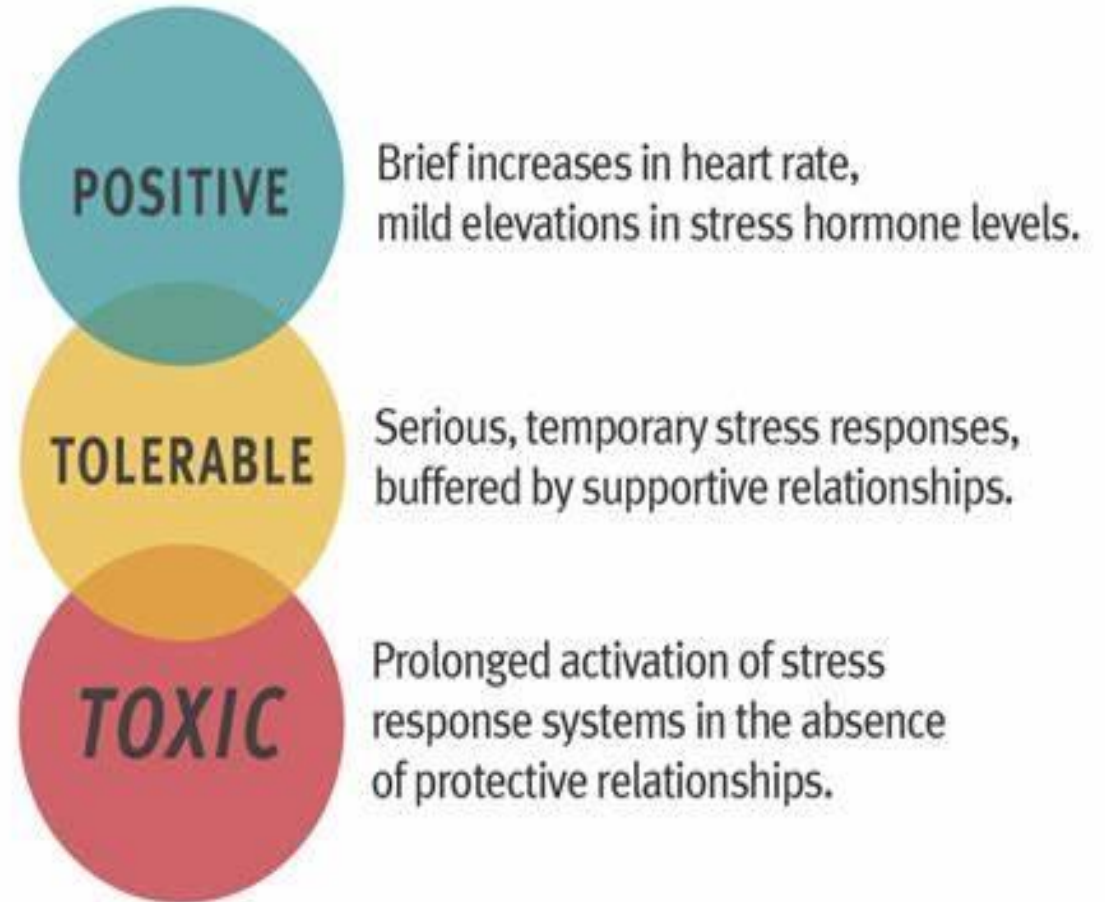
Healthy & Fit School Advisory Committees can serve as a catalyst for systemic changes in schools to promote student health and educational outcomes and can develop and implement school wellness policies and health enhancing programs which foster family and community support and involvement.”

Resource: <https://oklahoma.gov/health/health-education/community-outreach/community-development-services/school-health.html>

Buffering Supports turn Toxic Stress to Tolerable Stress



Source: Harvard's Center on the Developing Child





OKLAHOMA
State Department
of Health

Social Drivers of Health

**Peer Support Groups:
Address SDOH Needs, Improve Social Connection & Life Skills**

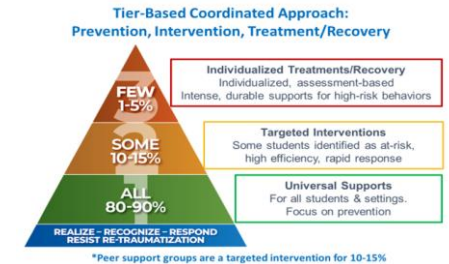
1) Reducing Sources of Stress/Removes Barriers for Participation
**provide weekly family meal, childcare, stipend,
and transportation if needed**

2) Supporting Responsive Relationships and Environments
**8–12 people meet weekly for 16+ weeks to build
authentic relationships that last beyond graduation**

3) Strengthening Core Life Skills
**Over 4-5 months, two trained facilitators use a
curriculum that builds executive functioning skills in 11
domains**

Sample SDOH Assessment (pre and post) peer support group to measure progress:

<https://fs27.formsite.com/a34q00/karddnch4j/index.html>





Parent Advisory Committees

- community voice
- advancing leadership skills among populations experiencing health disparities

A promotional poster for a training session. The top section is a blue banner with white text: "Developing & Sustaining Effective Parent Advisory Committees Training" and "September 18 & 19, 2023". Below this is a photograph of a woman with dark hair, wearing a light pink button-down shirt, sitting at a desk and smiling while looking at a laptop. To the left of the woman are three logos: the National Family Support Network logo (a map of the USA with a green outline), the Oklahoma Commission on Children and Youth logo (a colorful starburst), and the Oklahoma Commission on Children and Youth text. Below the photograph is another blue banner with white text: "Oklahoma professionals, register by 5 p.m. on September 1, 2023". At the very bottom is a light blue banner with dark blue text: "Developing & Sustaining Effective Parent Advisory Committees Virtual T...".

Resource: <https://handlewithcareok.org/parent-advisory-committee-training/>



OKLAHOMA
State Department
of Health

Family Resource Center Resources

**Standards
of Quality**

For Family Strengthening
and Support Training




- **community schools**
- **resource hubs**
- **one-stop shops**

Resource: <https://handlewithcareok.org/family-resource-center-resources/>


Goal....

All school districts collaborate with their local first responders to implement HWC, so all children can feel safe and learn.



HANDLE WITH CARE OKLAHOMA
PROTECT • HEAL • THRIVE

Our school practices
Handle With Care
so all children can feel safe and learn.



The "Handle With Care" Model: If a law enforcement officer encounters a child during a call, that child's information is forwarded to the school before the school bell rings the next day. The school implements individual class and whole school trauma-sensitive curricula so that traumatized children are "Handled With Care"; if a child needs more intervention, on-site trauma-focused mental healthcare is available at the school.

Learn more:
[HandleWithCareOK.org](https://www.HandleWithCareOK.org)

How is Handle With Care beneficial for children & youth?

- Improves early relational health & trust
- Improves positive school climate
- Improves youth mental health
- Increases attendance
- Increases academic success
- Improves positive life trajectory
- Decreases negative behavioral referrals
- Decreases truancy
- Decreases suspensions
- Decreases expulsions
- Decreases contact with the law

How is Handle With Care beneficial for each community?

- Empowers local communities to take initiative to address trauma
- Increases communication and coordination across agencies to improve community outcomes
- Builds trust with child and family
- Promotes problem-solving with family to increase family, youth, child, and infant stability
- Low-cost

How to advance Handle With Care OK in your community?

- Request a free trauma training NEAROK@okstate.edu
- Show the [Roll Call Video](#) at your next city council meeting
- Share the [process flow chart](#)
- Share the [HWC notification form](#)
- Town/law enforcement/school create an email: handlewithcare@yourtown.gov monitored by local multidisciplinary team (MDT)
- Law enforcement chief/sheriff/tribal marshal utilize [sample directive](#)
- Schools and law enforcement sign [sample partnership agreement](#)
- Attend a [Handle With Care Train the Trainer workshop](#)
- [Implement with fidelity](#)



**Click or Scan
QR code**



HANDLE WITH CARE OKLAHOMA

PROTECT • HEAL • THRIVE

Policy Action Steps to Advance HWC OK Statewide:

- 2018-2022: grassroots efforts in over 35 counties
- July - Submitted Interim Study application with bipartisan support
- July/August – Interim Study approved/prep and confirm speakers
- Oct. 20th at 10am – Presentation at State Capitol
- December 9th – Submitted Legislation topic; draft legislation
- January 18, 2023 – Submitted 1st version of legislation; HB 2513
- February 28, 2023 - Passed Common Education House Committee, Vote 11-0
- March 2023 – Passed House Floor, Vote 94-0
- April 2023 - Passed Senate Education Committee, Vote 12-0; passed Senate Floor, Vote 42-0
- ~~June 2023 - Budget vetoed by Governor~~ Continue to build consensus with community coalitions and first responders to have consistent law enforcement notification protocol to schools when child/teen is at a traumatic scene

[Link to HWC Advocacy Flyer](#)

Oklahoma Turning Point Council
COMMUNITY PARTNERS IN PUBLIC HEALTH INNOVATION

HANDLE WITH CARE
OKLAHOMA: HB2513
ACTION ALERT * VOTE YES

OTPC & community partners improve health outcomes by advocating for initiatives that reduce health disparities and strengthen all communities by increasing interagency collaboration and improving social determinants of health.

HB2513, a bipartisan bill by Rep. Pittman (D) and Sen. Pugh (R), creates statewide procedures for Handle With Care. If a law enforcement officer encounters a child during a call, that child's information is forwarded to the school before the school bell rings the next day. The school implements individual, class and whole school trauma-sensitive curricula so that traumatized children are "Handled With Care". Reduces truancy, suspensions, & expulsions. Increases youth mental health, attendance, and school engagement.

ACTION STEPS.... (DURING OFF-WORK TIME)

- Review House Bill 2513 and talking points. The bill must be heard on the Senate Floor before the April 27th deadline.
- Find and contact Sen. McCortney and other Senate Leadership
- Via phone or email, state your name and county of residence
- As a constituent, share your personal thoughts on HB 2513
- Reasons for bill moving forward & thank them for their support

Progress:

- Bill Filed
- House Committee, 11-0
- House Floor Vote, 94-0
- Senate Committee, 12-0
- Senate Floor Vote
- Gov. Signature

Perspective Shift

Conventional

People are bad.

People need to be punished.

What is wrong with you?

Trauma-informed

People are suffering.

People need to learn how trauma impacts a child's and adult's development.

What happened to you?

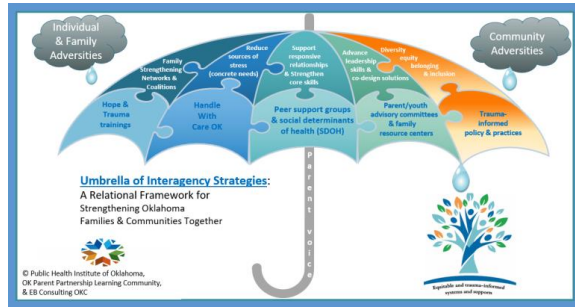
Resiliency-informed

People are resilient.

People need to learn how skills of well-being can reduce suffering.

What is right about you?

What are your strengths?



Q&A Group Discussion

Contact Info:
info@handlewithcareok.org



Public Health
Institute of
Oklahoma

Evaluation & Feedback



Additional Slides



Free Workshop Series: “Creating Connections to Support Oklahoma’s Youth”

Resilience Film, N.E.A.R. Science Trainings, Handle With Care OK training, Multi-Tiered Systems of Supports, Multidisciplinary Team Action Planning, & HWC OK Training



Potts Family Foundation



HANDLE WITH CARE OKLAHOMA
PROTECT • HEAL • THRIVE



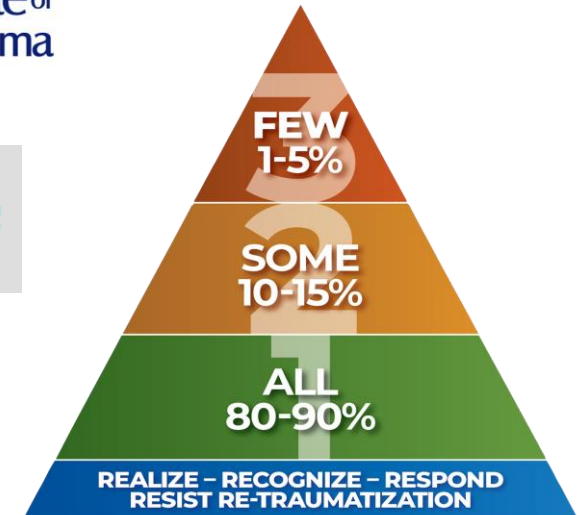
Public Health
Institute of
Oklahoma



Understanding
N. E. A. R.

Neuroscience
Epigenetics
Adverse Childhood Experiences
Resilience

Center for Family Resilience



Free Workshop Series: “Creating Connections to Support Oklahoma’s Youth”

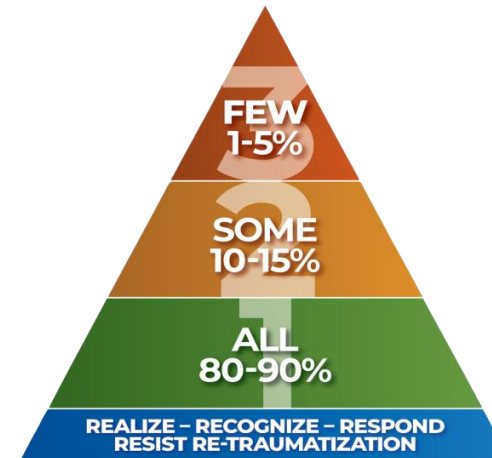
ACEs Primer, Resilience Film, N.E.A.R. Science Trainings, Handle With Care OK trainings, Multi-Tiered Systems of Supports, Multidisciplinary Team A



HANDLE WITH CARE OKLAHOMA
PROTECT • HEAL • THRIVE



Public Health
Institute of
Oklahoma





HANDLE WITH CARE OKLAHOMA

PROTECT • HEAL • THRIVE

For More Resources, Toolkits and Templates:

- **Handle With Care Toolkit for Law Enforcement:**
<https://handlewithcaremd.org/law-enforcement-protocol.php>
- **Handle With Care Community Action Pack:**
<https://salud-america.org/handle-with-care-full-action-pack/>
- **Sample of statewide website from West Virginia:**
<http://www.handlewithcarewv.org/handle-with-care.php>
- **Request Training from Oklahoma School Security Institute (OSSI)**
Email: tenna.abraham@dps.ok.gov



HANDLE WITH CARE OKLAHOMA

PROTECT • HEAL • THRIVE

**Expanding Infrastructure Support:
CHIOs + Community Coalition Coordinators + Community Partnership – Barrier Removal Funds**

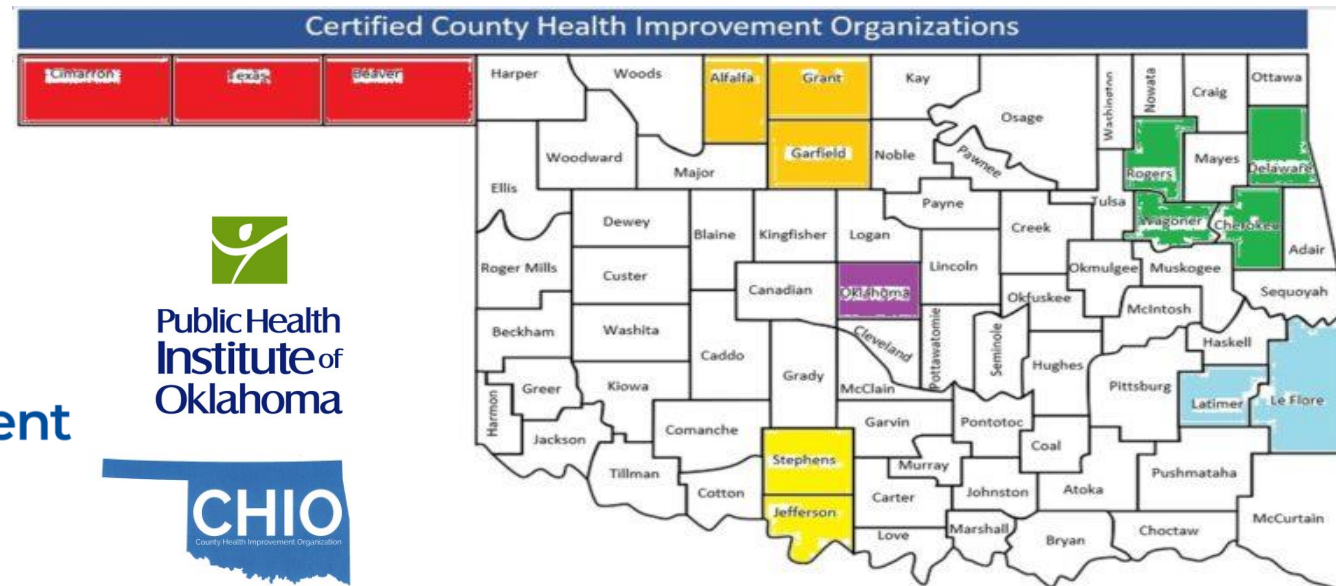
Planning Grant
Aug. 1, 2022 – May 31, 2023
Funded by:

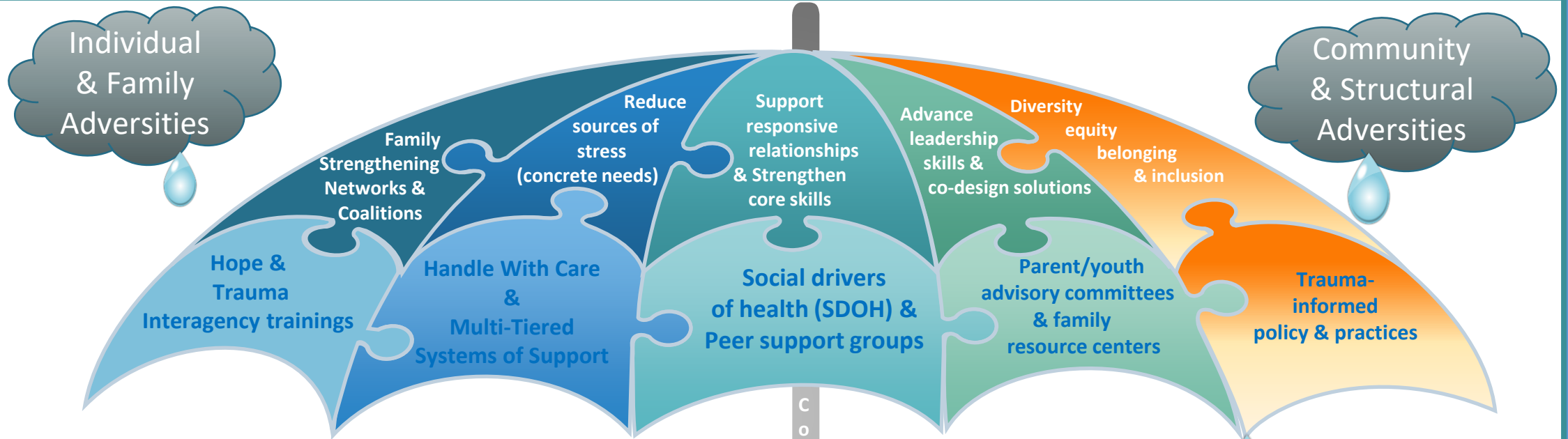


OKLAHOMA
State Department
of Health



Public Health
Institute of
Oklahoma





Umbrella of Interagency Strategies:

A Relational Framework for
Strengthening Oklahoma
Families & Communities Together



© Public Health Institute of Oklahoma,
OK Parent Partnership Learning Community,
OK Turning Point Council & OSDH

Examples of Community-Driven, Relational Health Improvement, & Interagency Efforts:



A Relationship-Based Quality Improvement Framework: Addressing Health Disparities & Strengthening Communities

Based on real-time local health and social data, entities supporting health improvement, especially within inequity hotspots, are **funded to co-design a common agenda while removing barriers and creating pathways for local participation.** Underserved youth and adults are encouraged and sponsored to create **community advisory committees, contribute to qualitative data, & co-present at cross-sector health trainings**

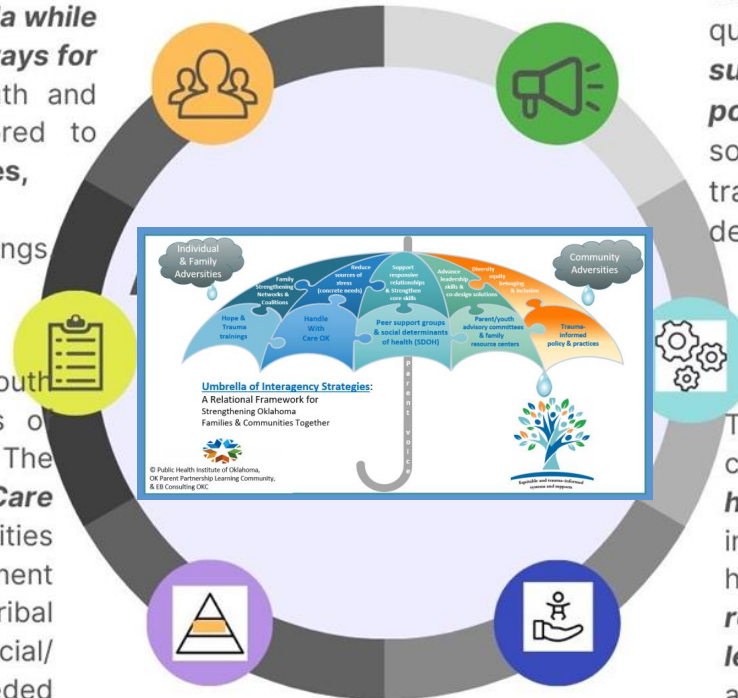
Step Two

Interagency collaboration supports youth and families during critical windows of need, such as a traumatic event. The initiation of a **"Handle With Care Agreement"** is locally coordinated. Entities supporting local health improvement efforts align first responders, tribal marshals, schools, behavioral /social/ health agencies to address needed supports post-trauma.

Through trusted relationships with children and families, navigators use referral systems to connect to supports as needed. Collaborative partners facilitate **peer support groups for adults and youth** with multiple needs at family resource centers, community schools, health care facilities, or faith-based organizations. **Mutually reinforcing activities impact multiple diseases and conditions through several pathways.**

Step One

Step Six



Step Three

Step Four

Step Five

With an emphasis placed on Quality Improvement, priority communities provide structured feedback at regular intervals on quantitative and qualitative data. **Feedback supports the updating of trauma-informed policies** and procedures for local health and social service organizations in addition to tracking progress on addressing social determinants of health.

Through collaboration, health entities and consumers are able to **increase access to health coverage**, such as Medicaid, through intentional outreach activities. Connection to health improvement is **enhanced by referrals from trusted persons at the local level** to programs focused on employment and other socially-focused interventions.

Health improvement partners remove barriers for participation, such as childcare, family meal, transportation, and providing a stipend to honor time and expertise, as funding is available. **Social determinants of health assessments provide shared measurements.** Progress is measured at 6, 12, and 24 months. Peer support group graduates are recruited to community advisory committees to advance leadership skills and create a **pipeline for community voice & employment.**





HANDLE WITH CARE OKLAHOMA

PROTECT • HEAL • THRIVE

Contact info:

info@handlewithcareok.org