



HANDLE WITH CARE OKLAHOMA

PROTECT • HEAL • THRIVE

Website: <https://handlewithcareok.org/>
Email: info@handlewithcareok.org



Overview:

Breaking Silos & Creating Connections to Support Oklahoma's Youth

Updated 6/14/2024



OKLAHOMA
State Department
of Health

OSDH Planning Grant: Health Disparities
Aug. 1, 2022 – May 31, 2023

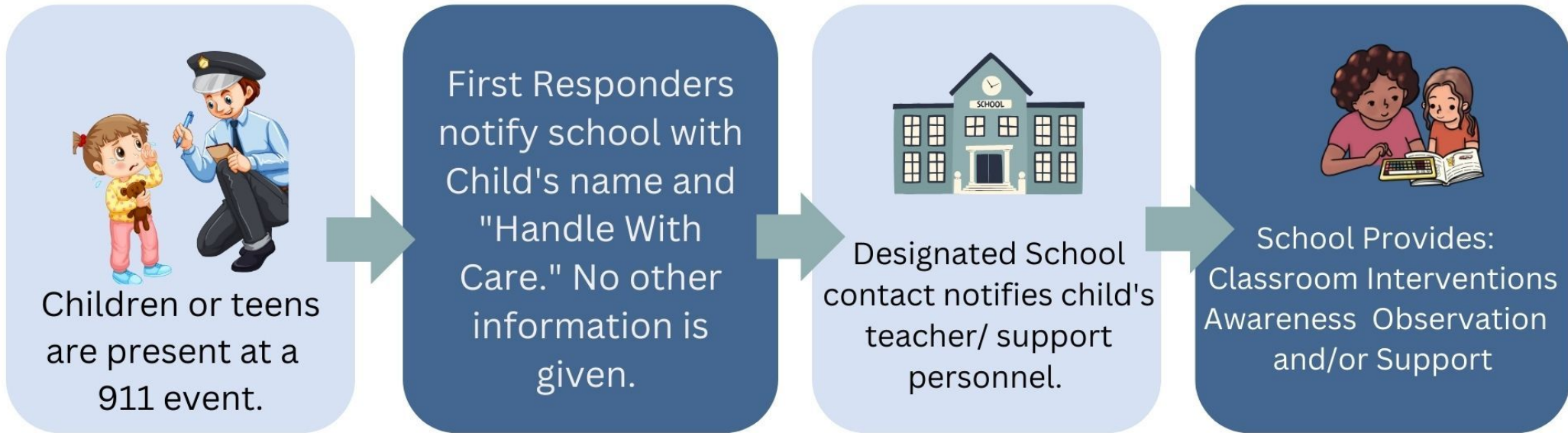


Public Health
Institute of
Oklahoma



OKLAHOMA
Department of Public Safety

Flow Chart:



From school notification, additional support may be needed. Teachers/Behavioral/Social Service/Health Specialists assess to provide interventions and support as needed.

Children must feel safe in order to learn.

Overview Video & “Handle With Care: Community Spotlights”



First responders often walk away from a traumatic scene wishing they could do more for the kids.....

Source: 9 min Overview to Share with Community
<https://vimeo.com/380526937>

Tahlequah Video: (rural partner)
<https://www.youtube.com/watch?v=JXe-n10xNdl>

OKC Video: (urban partner)
https://www.youtube.com/watch?v=IKPady_4vGw

How is Handle With Care beneficial for each community?

- Empowers local communities to take initiative to address trauma
- Increases communication and coordination across agencies to improve community outcomes
- Builds trust with child and family
- Promotes problem-solving with family to increase family, youth, child, and infant stability
- Low-cost

Partners Supporting Integrated HWC Trainings that Enhance Existing School-Based Partnerships and Collaborative Efforts

Sector-Specific Training:

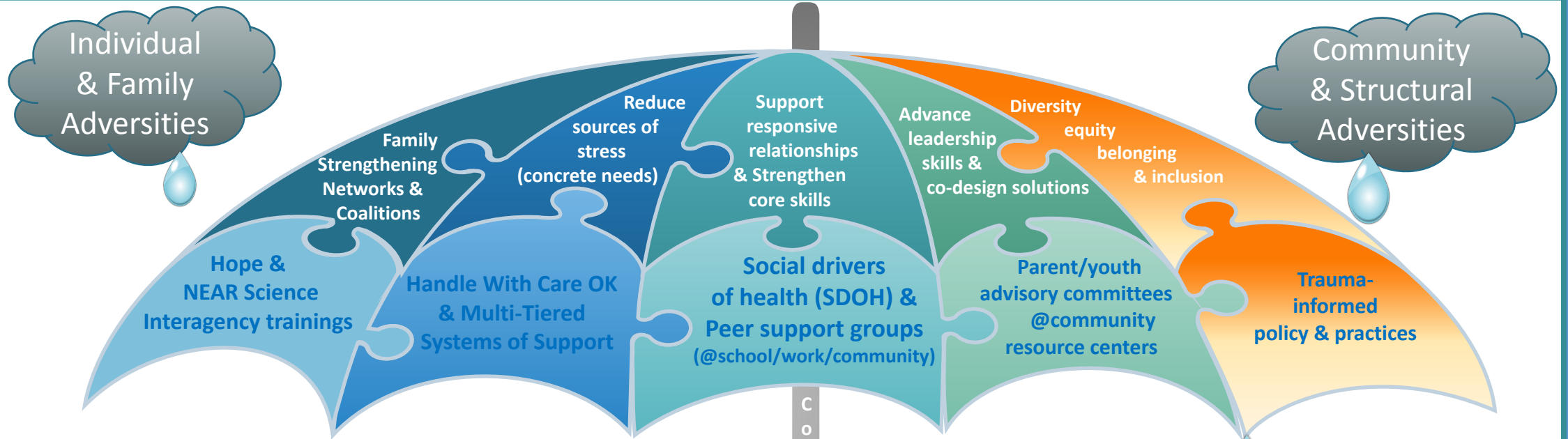
911 Dispatch Centers:	RB Hauf (RAVE)
Law Enforcement:	Gary Shelton (CLEET), Keith Stewart (OK School Security Institute - Mission SOS)
Schools:	Sheri Fleming, Cindy Swearingen (OSDE - Safe & Healthy Schools)
Mental Health:	Brittany Couch & Cory Sutton (ODMHSAS - Behavioral Interventions and Support Services Schools & CIT)
Social Services:	Monica Brumnett & Heather Cristiano (OKDHS - School-based Specialists)
Health Services:	Karin Leimbach (OSDH - Whole School, Whole Community, Whole Child)
District Attorney:	Jennifer Crilly, Director of Training (DA Council)
Coalitions:	Robert Lee/Doug Ishmael (Evolution Foundation - Systems of Care Coalitions)

Monthly HWC OK Community Support & Planning Calls: (all are welcome)

1st Wednesday of the Month 10:00am – 11:00am

<https://us02web.zoom.us/j/84481751587> hosted by [Public Health Institute of Oklahoma](#)

[Calendar Series Invitation Link: Click Here](#)



Umbrella of Interagency Strategies:

A Relational Health Framework for
 Strengthening Oklahoma
 Families & Communities Together



Public Health
 Institute of
 Oklahoma



© Public Health Institute of Oklahoma,
 OK Parent Partnership Learning Community,
 OK Turning Point Council & OSDH

How to advance Handle With Care OK in your community?

- Request a free trauma training by [completing this form](#) or email NEAROK@okstate.edu
- Show the [Roll Call Video](#) at your next city council meeting
- Share the [process flow chart](#)
- Share the [HWC notification form](#)

- Town/law enforcement/school create an email: handlewithcare@yourtown.gov monitored by local multidisciplinary team (MDT)
- Law enforcement chief/sheriff/tribal marshal utilize [sample directive](#)
- Schools and law enforcement sign [sample partnership agreement](#)
- Attend a [Handle With Care Train the Trainer workshop](#)
- [Implement with fidelity](#)



**Click or Scan
QR code**